

# 4100ES-S1

## Brigade Interface Door Kit

---

### INSTALLATION INSTRUCTIONS

These instructions cover fitting and wiring of the two different brigade interface doors to the 4100ES-S1 Fire Alarm System.

#### KIT CONTENTS

- FP0935 FP,4100ES-S1 1976-174,ASE DOOR KIT
- 1 x 4U hinged door, with ASE cover and barrel nuts already fitted
  - 1 x 3 way connector and 1 x 2 way connector for connection to the ASE when it is fitted
  - 1 x FP0740 FAS interface module with red, yellow, blue and white wires
  - 1 x pair of red and black wires for connecting the ASE to the 4100U-S1 DC supply
  - 4 x M6 screws, washers and cage nuts for mounting the door
  - 5 x Cable ties and adhesive cable tie holders for fastening the ASE wiring
  - 1 x green earth lead + nut and washers to earth the door to the expansion bay
  - 2 x M4 x 16 screws and crinkle washers to mount the ASE to the door
  - 2 x ASE TNC Connect Insulation Bush to mount ASE Aerials
  - 2 x ASE TNC Connect Insulation Washer to mount ASE Aerials
- These installation instructions.
- FP0937 FP,4100ES-S1 1976-174,WA/CUBE ASE DOOR KIT
- 1 x 4U hinged door with spacer bracket, connector strip, label and wiring already fitted
  - 4 x M6 screws, washers and cage nuts for mounting the door
  - 5 x Cable ties and adhesive cable tie holders for fastening the WA/CUBE ASE wiring
  - 1 x green earth lead + nut and washers to earth the door to the expansion bay
  - 4 x 3/8" PK screws for mounting the CUBE ASE on the spacer bracket
  - 4 x 25mm male/female barrel nuts for the WA/CUBE ASE mounting option
  - 4 x M4 x 10 screws with washers for mounting the WA ASE on the spacer bracket
  - 3 x 15K resistors
- These installation instructions and literature LT0316.

#### DOOR MOUNTING

Both types of brigade doors mount in the 4 unit space at the bottom of the 4100ES-S1 cabinet, using 4 x M6 screws, washers and cage nuts. Cage nuts should already be fitted to the 4100ES-S1 and screws supplied with it, but there are spare screws, washers and cage nuts supplied with this kit in case the others have been lost.

#### GENERAL WIRING

The WA/CUBE ASE should be powered from the fused DC distribution board on the power supply. It is recommended that the brigade device does not share its fuse protection with any other equipment, for reliability. The wiring between the brigade device and the 4100ES-S1 should be routed neatly as shown in the following drawings, and secured in place with the cable ties and adhesive tie holders supplied with the kits. Fit the protective earth lead between the quick-connect tap on the brigade interface door and an unused stud in the lower right end of the expansion bay, using the nut and washers supplied with this kit.

#### WA/CUBE ASE MOUNTING

The WA ASE (Code Red III) or CUBE ASE must be obtained separately. The FP0937 brigade interface door is supplied assembled ready to take an WA ASE, which is fastened directly to the spacer bracket by four screws supplied with the kit. To mount a CUBE ASE, the spacer bracket must be removed and reassembled using the extra 25mm male/female barrel nuts supplied according to drawing 1976-174 sheet 5 on page 3. The CUBE ASE is fastened directly to the spacer bracket using four 3/8" PK screws supplied with this kit.

#### WA/CUBE ASE WIRING

For the WA ASE the pre-fitted wiring must be connected to the 4100ES-S1's Alarm Relay terminals as shown in 1976-174 sheet 5 on page 3. For the CUBE ASE the FP0740 FAS Interface Module connects to the 4100ES Alarm Relay Card. Set the three links on the 4100ES Alarm Relay card to the NO positions for a WA ASE and the NC positions for a CUBE ASE.

#### CENTAUR II ASE MOUNTING

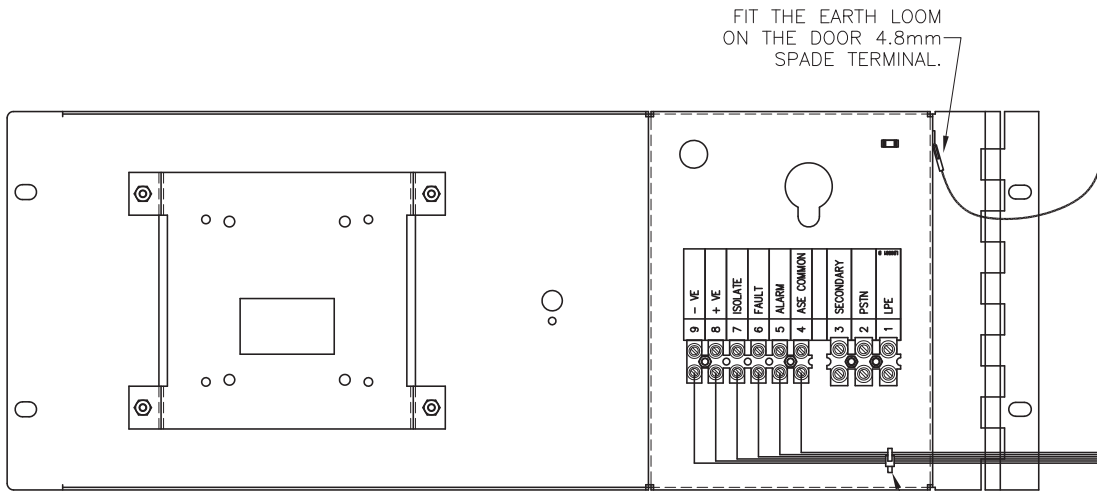
The ASE unit must be obtained separately. If it is supplied complete with a body, this must be removed before fitting the ASE to the door. The ASE is fastened to the brigade interface door with the two M4 screws and crinkle washers in the kit. The antenna socket should be fitted to the tab on the door below the ASE position. See drawing 1976-174 sheet 1 on page 4 and the ASE installation instructions for details.

#### CENTAUR II WIRING

The FP0740 ASE FAS module must be connected to the 4100ES-S1's Alarm Relay terminals and the 2 way ASE connector as shown in 1976-174 sheet 1 on page 4. Set the three links on the Alarm Relay card to the NC positions.

---

Manufactured by:	Tyco Fire Protection Products 17 Mary Muller Drive, PO Box 19-545 Christchurch, New Zealand Tel +64-3-389 5096 Fax +64-3-389-5938	Distributed by:
------------------	---	--------------------



INSTALLATION WIRING

NOTES:

1. REFER TO LITERATURE LT0316 (DRAWING 1922-96 SHEETS 1 AND 2) FOR MORE WIRING DETAILS.

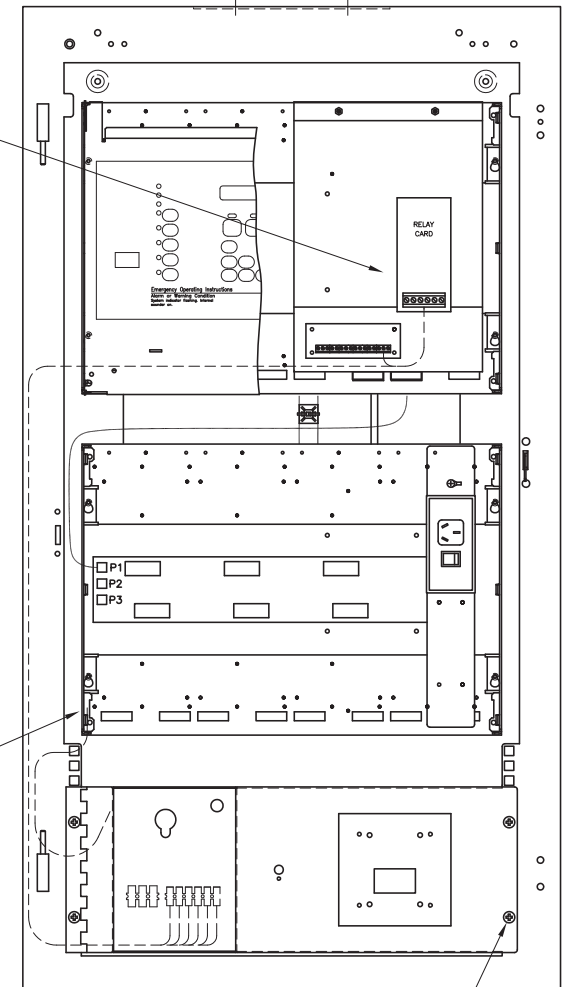
WIRE 4U WA/CUBE ASE DOOR TO SPS BRD AND RELAY BRD AS PER DRAWING 1922-96 SHEETS 1 & 2.

FIT THE EARTH LOOM ON THE DOOR 4.8mm SPADE TERMINAL.

FIX M4 LUG END OF THE DOOR EARTH LOOM TO BAY 6/32 UNC STUD WITH 6/32 NUT AND M4 SHAKEPROOF WASHERS SUPPLIED.

FIT 4U DOOR EARTH LOOM TO BAY 6/32 UNC STUD.

SECURE WIRES TO DOOR USING CABLE TIE HOLDER IN METALWORK & SU0020, 1 PLACE.



MOUNT ASE/MIC DOOR WITH  
 4 OFF M6 X 12 SCREW, (SC0058)  
 4 OFF FLAT M6 WASHER, (WA0008)  
 4 OFF M6 CAGE NUT, (NT0030).

CABINET INSTALLATION

CONFIDENTIAL: THIS DOCUMENT MUST NOT BE COPIED NOR THE CONTENTS PASSED ON TO ANY THIRD PARTY WITHOUT THE CONSENT OF THE COMPANY.

UNLESS OTHERWISE STATED: ALL DIMENSIONS IN MILLIMETRES. DO NOT SCALE. TOLERANCES ARE TO BE: 1 DECIMAL PLACE ±0.5, 2 DECIMAL PLACES ±0.3, 3 DECIMAL PLACES ±0.1

3rd ANGLE PROJECTION

ISS/REV	AMENDMENTS	ECO	DRN	CHKD	AUTH	APVD	DATE
A	ORIGINAL	-	KJS	LSC	RC	DP	21-12-05
B	AIU BRACKET UPDATED	3810	KJS	LSC	LSC	DP	12-2-07
C	NOTE 1 UPDATED. REF TO DRG 1901-267 REMOVED.	ESC1309	KJS	GEL	RC	DP	19-11-08
D	SHEET 5 ADDED. THIS SHEET WAS SHT 3 OF 4.	ESC1309	GEL	LSC	LSC	DSCP	03-12-08
E	UPDATED FOR NEW WA ASE.	4333	KJS	YZH	RC	DP	6-3-13
F	3U ASE DOOR HINGING CHANGED.	4704	KJS	LSC	LSC	DP	19-2-15

**tyco**  
 Fire Protection Products

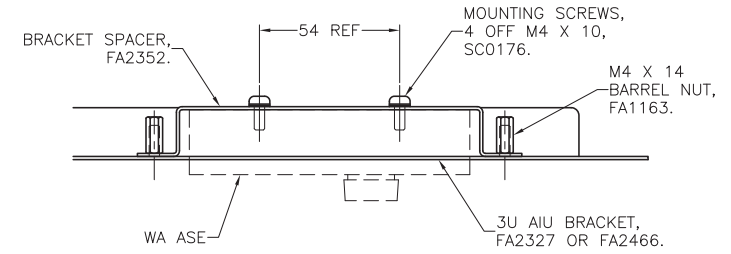
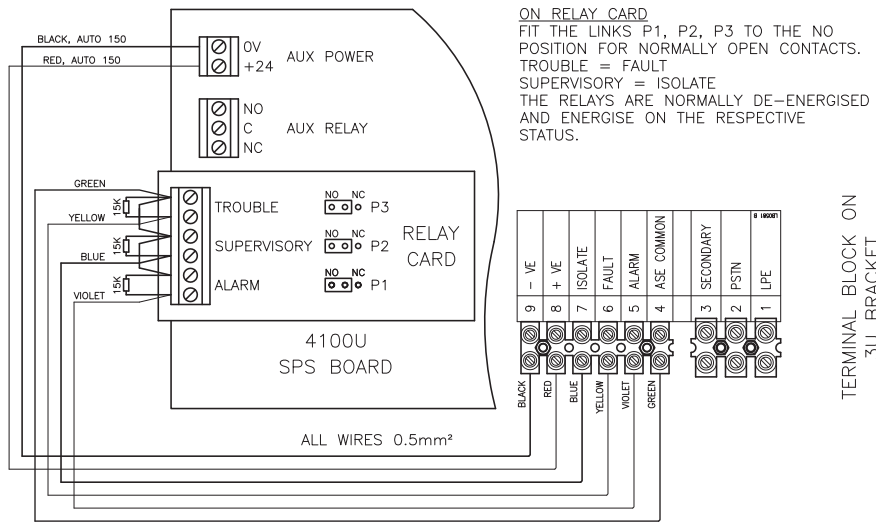
TYCO FIRE PROTECTION PRODUCTS  
 17 MARY MULLER DRIVE  
 P.O. BOX 19545  
 CHRISTCHURCH, PH: +64 3 3895096  
 NEW ZEALAND. FAX: +64 3 3895938

**4100ES - S1**  
**WA/CUBE ASE 4U DOOR**  
**WIRING DETAILS**

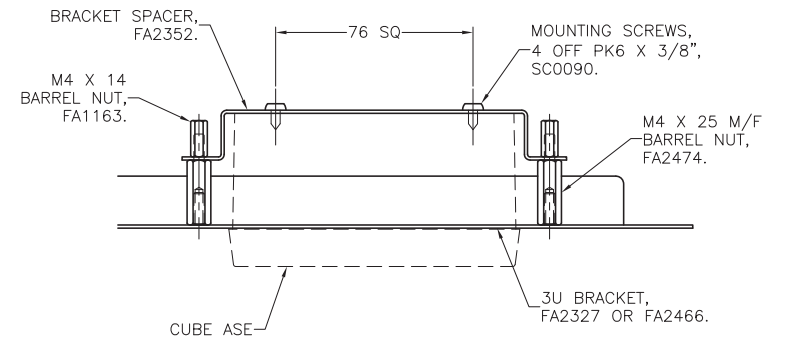
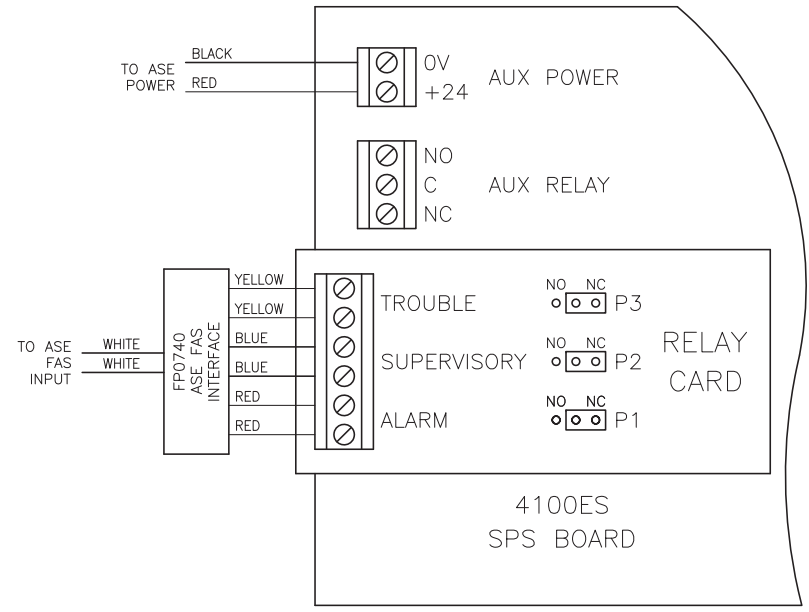
---

DRAWING No: **1976-174** SHEET **3** of **5**

<b>A3</b>	ISS/REV <b>F</b>	PART No: <b>FP0937</b>
-----------	------------------	------------------------



WESTERN AUSTRALIA ASE WIRING AND ASSEMBLY



QUEENSLAND CUBE ASE WIRING AND ASSEMBLY

CONFIDENTIAL: THIS DOCUMENT MUST NOT BE COPIED NOR THE CONTENTS PASSED ON TO ANY THIRD PARTY WITHOUT THE CONSENT OF THE COMPANY. UNLESS OTHERWISE STATED: ALL DIMENSIONS IN MILLIMETRES. DO NOT SCALE. TOLERANCES ARE TO BE: 1 DECIMAL PLACE ±0.5, 2 DECIMAL PLACES ±0.3, 3 DECIMAL PLACES ±0.1 3rd ANGLE PROJECTION

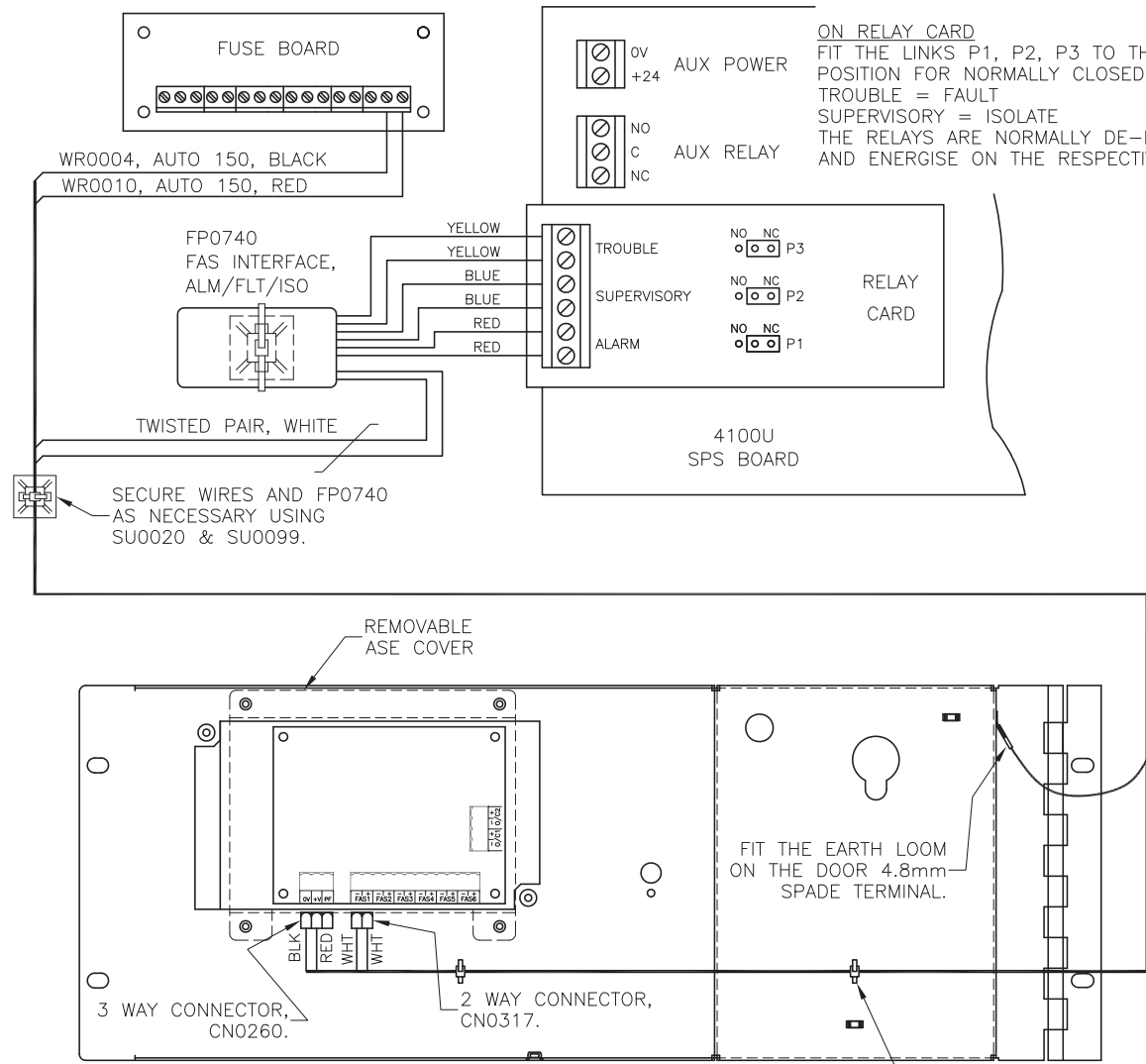
ISS/REV	AMENDMENTS	ECO	DRN	CHKD	AUTH	APVD	DATE
A	ORIGINAL - FROM 1901-267 SHT 2 REV C.	ECS1309	GEL	LSC	LSC	DSCP	03-12-08
B	UPDATED FOR NEW WA ASE.	4333	KJS	YZH	RC	DP	6-3-13

**tyco**  
Fire Protection Products  
TYCO FIRE PROTECTION PRODUCTS  
17 MARY MULLER DRIVE  
P.O. BOX 19545  
CHRISTCHURCH, PH: +64 3 3895096  
NEW ZEALAND. FAX: +64 3 3895938

4100ES - S1  
WA / CUBE ASE TO SPS  
WIRING DETAILS

DRAWING No: 1976-174 SHEET 5 of 5

A2	ISS/REV	B	PART No: FP0937
----	---------	---	-----------------

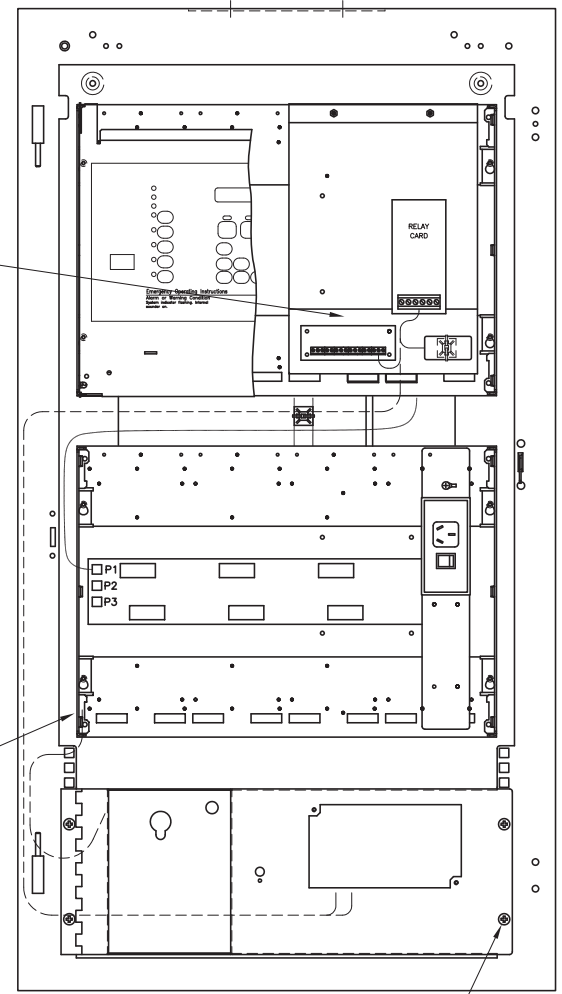


INSTALLATION WIRING

WIRE 4U ASE/MIC DOOR AND FAS INTERFACE TO SPS BRD AND RELAY BRD AS SHOWN.

FIX M4 LUG END OF THE DOOR EARTH LOOM TO BAY 6/32 UNC STUD WITH 6/32 NUT AND M4 SHAKEPROOF WASHERS SUPPLIED.

FIT 4U DOOR EARTH LOOM TO BAY 6/32 UNC STUD.



CABINET INSTALLATION

CONFIDENTIAL: THIS DOCUMENT MUST NOT BE COPIED NOR THE CONTENTS PASSED ON TO ANY THIRD PARTY WITHOUT THE CONSENT OF THE COMPANY.

UNLESS OTHERWISE STATED: ALL DIMENSIONS IN MILLIMETRES. DO NOT SCALE. TOLERANCES ARE TO BE: 1 DECIMAL PLACE ±0.5, 2 DECIMAL PLACES ±0.3, 3 DECIMAL PLACES ±0.1

3rd ANGLE PROJECTION

ISS/REV	AMENDMENTS	ECO	DRN	CHKD	AUTH	APVD	DATE
A	ORIGINAL	-	KJS	LSC	RC	DP	21-12-05
B	SHEET 5 ADDED. THIS WAS SHT 1 OF 4	ECS1309	GEL	LSC	LSC	DSCP	03-12-08
C	3U ASE DOOR HINGING CHANGED.	4704	KJS	LSC	LSC	DP	19-2-15

**tyco**  
Fire Protection Products

TYCO FIRE PROTECTION PRODUCTS  
17 MARY MULLER DRIVE  
P.O. BOX 19545  
CHRISTCHURCH, PH: +64 3 3895096  
NEW ZEALAND. FAX: +64 3 3895938

**4100U - S1**  
**FAS INTERFACE ALM/FLT/ISO**  
**WIRING DETAILS**

DRAWING No: **1976-174** SHEET **1** of **5**

<b>A3</b>	ISS/REV <b>C</b>	PART No: <b>FP0935</b>
-----------	------------------	------------------------