


**Exciting.
Efficient.
Extraordinary.
Essential.**

Shaping the Future of
LIFE-SAFETY

SIMPLEX 4100ES
FIRE AND LIFE-SAFETY PLATFORM

 **Simplex**



New Simplex 4100ES (eServices) Fire Alarm System utilising new technology to help deliver higher levels of serviceability, manageability and value over the life-cycle of your investment.

- Remote Downloads enable faster programming and operation of a full network of panels from a central location
- Install Mode can greatly simplify retrofits and upgrades
- Mass Storage Device lets you easily and securely store and archive system data
- Seamless, economical upgrade path for legacy Simplex systems
- Unique Commissioning Tool - commission addressable loops as they are installed. No need to wait until the entire installation is complete.

Secure storage for improved access and compliance

A 2GB Compact Flash memory Mass Storage Device stores and archives vital data within the panel, such as system software programs, building plans, inspection/test reports and other critical site information. No extra cabinets are needed in the control room, and everything is within easy reach. Plus, the Mass Storage Device is supervised by the panel so you can be alerted in the event of removal or failure.

Easier installation and upgrades

Projects that require a phased installation can benefit from the features of Install Mode. Install Mode enables the panel to provide a single system fault for points that are programmed but not yet wired, or wired but not yet commissioned. This can help eliminate recurring faults during installation and reduce system operator frustration.

Remote Downloads

Minimise disruptions and have your system up and running faster than ever. Technicians can download programs to your entire network of panels from a single location. The new programs will automatically be archived on the Mass Storage Device, along with all previous programs, for easy retrieval and comparison.

Exciting new features, same great reliability

The new 4100ES system retains all the critical functions of the 4100U, plus our innovative (optional) Simplex SafeLINC Internet interface, and the ability to generate and specifically target multiple alerts simultaneously.

TrueStart Commissioning Tool

Reduce installation & commissioning time The TrueStart tool will scan your system and pinpoint potential problems such as ground faults, shorted wiring, incorrect or duplicate addressing, etc.



Non Proprietary Philosophy

The Simplex 4100ES can be installed, programmed and serviced by any company whose technicians have undertaken training provided by Tyco. Tyco only allows such companies to access our programmers, ensuring only qualified personnel modify these important life-safety systems, while allowing flexibility of choice for the end user in the service company they select.

Non Obsolescence Philosophy

The Simplex range of fire products are designed to be forward and backward compatible. This means that Simplex will always have an upgrade path provided to maintain your system as new technologies evolve. Upgrading your 4100 system allows you to use the next generation of 4100 spare parts, thereby extending your system's life cycle for many years. It also aids your business in complying with Australian regulatory requirements.





The 4100ES platform is extremely well aligned with my goals as an engineer. With an international product designed and manufactured in the USA & NZ, along with a long standing heritage of the Simplex brand internationally, this gives me an added sense of quality and reliability.

An innovative world class product



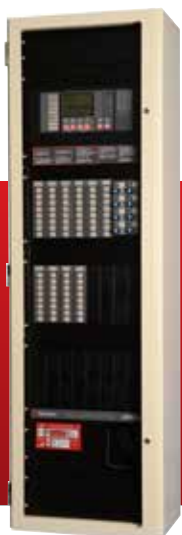
The 4100ES can connect all my remote fire panels on a common network. The innovative IP technology and TrueSite client-server application allows me to have control over the entire system via a wireless tablet.

Leading the markets with innovative Ideas



In a busy factory environment, I need effortless support for my life-safety systems. With remote download, a Simplex-accredited technician can download all the programs for our networked panels from one location, saving us time and money.

Future proof your investments



The Simplex 4100ES Fire Alarm System takes our leading fire and life-safety technology to a new level.



The 4100ES gives my hospital enhanced records storage. Records management is vital to our day-to-day operations and accreditation. The Mass Storage Device stores building plans and inspection/test records inside the panel, so they are always easily available.

Solve and simplify complex engineering documentation storage



I love how efficient the new Install Mode is. I can activate the 4100ES one floor at a time, without having to modify the software or rely on a programmer to add in each area.

Quick and easy installation saving time and money



As a building and facility owner, my key concerns when it comes to Fire Detection devices are cost savings, extended panel lifespan and not having obsolete device issues. The Simplex 4100ES with its forward and backward compatibility ensures that the system will never go out of date - it is a system for life, and that is a Simplex design philosophy.

Extend your product ROI for generations to come

Simplex has led the industry with the 4100U system. Now, with the 4100ES platform, we've added a suite of technology and service improvements that can make everyone's job easier, from contractors to facility managers and building owners, by improving serviceability, reducing costs and saving time.

An effective solution for large sites

Simplex fire panels have been helping customers protect people and facilities in office complexes, high-rise towers, corporate campuses, shopping centres and retail businesses for decades – delivering solutions for new construction, retrofits and upgrades.

Here is a selection of real-world examples of major sites in Australia that continue to benefit from the life-safety protection provided by a large installed base of Simplex 4100 fire panels.

- University campus with over 65 networked 4100 panels
- Road tunnel with 70 networked 4100 panels
- Entertainment complex with over 60 networked 4100 panels
- Mining site with 20 networked 4100 panels
- Multi-use education/administration site with over 100 networked 4100 panels

The 4100ES is well suited for commercial applications because it supports the full Simplex portfolio: fire alarm, fire sprinkler, fire suppression, emergency communications, and special hazards systems and services. We provide everything from standalone systems to networked, enterprise-wide solutions.

For those networked solutions, we can provide advanced graphical life-safety information management systems that monitor and control multiple panels across multiple buildings from a single location.

On top of all that, the 4100ES system offers:

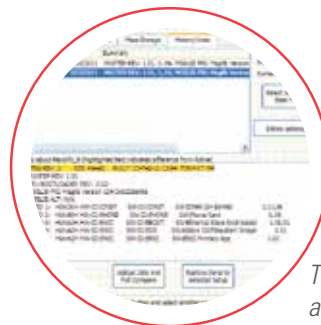
- Forward/backward compatibility to help protect your investment and enable easy upgrades to newer technology
- Support for up to 686 networked panels that can be arranged over seven loops across a large complex or campus
- TrueInsight Remote Service that can speed problem diagnosis and repair and minimise downtime and disruption
- A Compact Flash mass storage device that keeps vital data safe and within reach, right within the panel

Rather than take a one-size-fits-all approach to the life-safety challenges in the commercial market, Simplex can tailor a customised solution to fit your needs, schedule and budget. With TrueInsight Remote Service and remote software downloads, the 4100ES can greatly reduce service visits, sparing you hours of time and effort to escort service technicians around a facility or campus.

It's easy to see why many commercial customers are turning to one source: Simplex to handle their fire and life-safety needs, whether it's new construction, renovation, or a retrofit project.



Flexible, programmable switches give your operators simple, one-touch control over critical system functions such as elevators and fans, and allow critical messages to be launched with the push of a button.



The Mass Storage Device can archive all 4100ES programs as well as tests and panel changes. It is supervised for failure and removal.



System programming can be downloaded from a remote location over a corporate LAN, decreasing download time whilst avoiding the need to have escorts accompany technicians to sensitive areas of a facility



InfoAlarm large QVGA display shows graphic information in myriad ways, supporting up to 854 characters of text.

Optional Tone Generator is ideal for Emergency Voice Evacuation applications. The 50W T-GEN 50 generates evacuation messages and tones which are compliant with AS 1670.1.





Level 3, 95 Coventry Street
Southbank VIC 3006
Tel : 1300 725 688
Tel : +61 3 9313 9700
Fax : +61 3 9313 9709
Email : tfppcustservice.au@tycofp.com

Form No. 4100ESBRO1402

SIMPLEX is a trademark of ADT Services GmbH or its affiliates. MAPNET II, SAFELINC, TRUEALARM, TRUESTART are trademarks of ADT Services AG or its affiliates. TYCO is a trademark of Tyco International Services GmbH. Windows is a registered trademark of Microsoft Corporation in the United States and other countries. © 2013 Tyco Australia Pty Limited. A.B.N. 80008399004. Unauthorised use of trademarks is strictly prohibited. Printed November 2013

The Tyco logo, consisting of the word 'tyco' in a bold, lowercase, italicized sans-serif font.