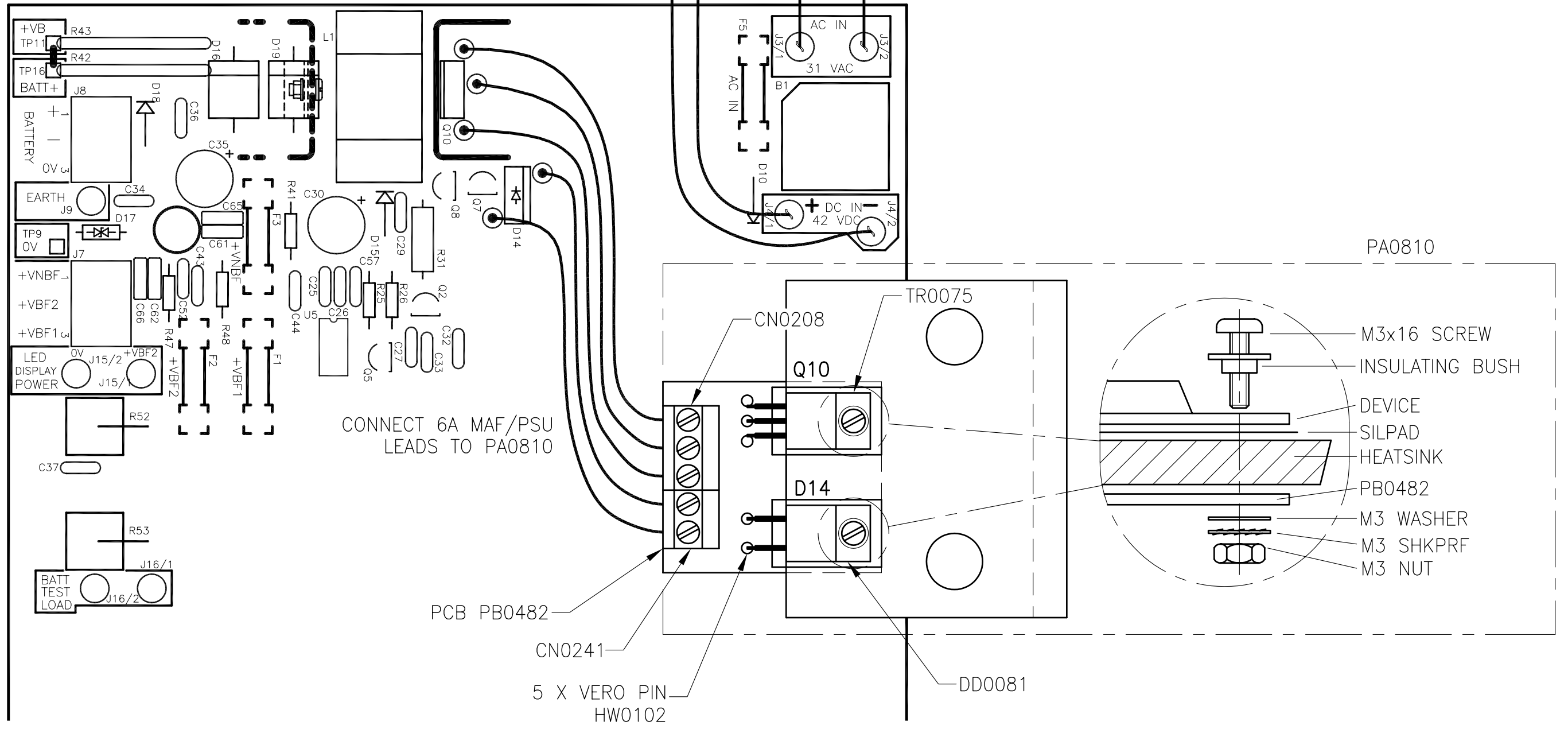


RUN 2 X 200mm AUTO 150 LEADS FROM 3A RECTIFIER BRD TO MAF/PSU BRD. EACH END OF LEADS TERMINATED WITH A 2.3mm CRIMP RECP (CN0028).

CONNECT SECONDARY LEADS FROM BOTTOM TRANSFORMER UNIT ONTO MAF/PSU BRD.



6 AMP MAF/PSU PCB AND HEAT SINK CONNECTION DETAIL

PA0809, 1931-3-2, F3200 MAF/PSU, 6A  
 PA0874, 1931-3-4, F3200 4428.1 MAF/PSU, 6A

CONFIDENTIAL: THIS DOCUMENT MUST NOT BE COPIED NOR THE CONTENTS PASSED ON TO ANY THIRD PARTY WITHOUT THE CONSENT OF THE COMPANY.

UNLESS OTHERWISE STATED: ALL DIMENSIONS IN MILLIMETRES. DO NOT SCALE. TOLERANCES ARE TO BE: 1 DECIMAL PLACE ±0.5, 2 DECIMAL PLACES ±0.3, 3 DECIMAL PLACES ±0.1

3rd ANGLE PROJECTION

ISS/REV	AMENDMENTS	ECO	DRN	CHKD	AUTH	APVD	DATE
G	REDRAWN ON A1 & A3 SHEET, PA0810 AND GEAR PLATE ASSEMBLY DETAILS ADDED.	2803	KJS	GEL	TH	DSP	29-5-98
H	PA0810 CONNECTORS WERE 1 X CN0355 & 0.65 X CN0361.	ECS603	KJS	GEL	TWH	DSP	24-8-99
I	PA AND DRAWING REFERENCES CHANGED TO ACCOMMODATE AS4428.1 PRODUCTS	3041	KJS	GEL	TWH	DSP	18-10-00
J	MAF/PSU BOARD LAYOUT CHANGED. WIRES WERE COLOUR CODED.	3456	RMH	KJS	LSC	DSCP	20-10-03

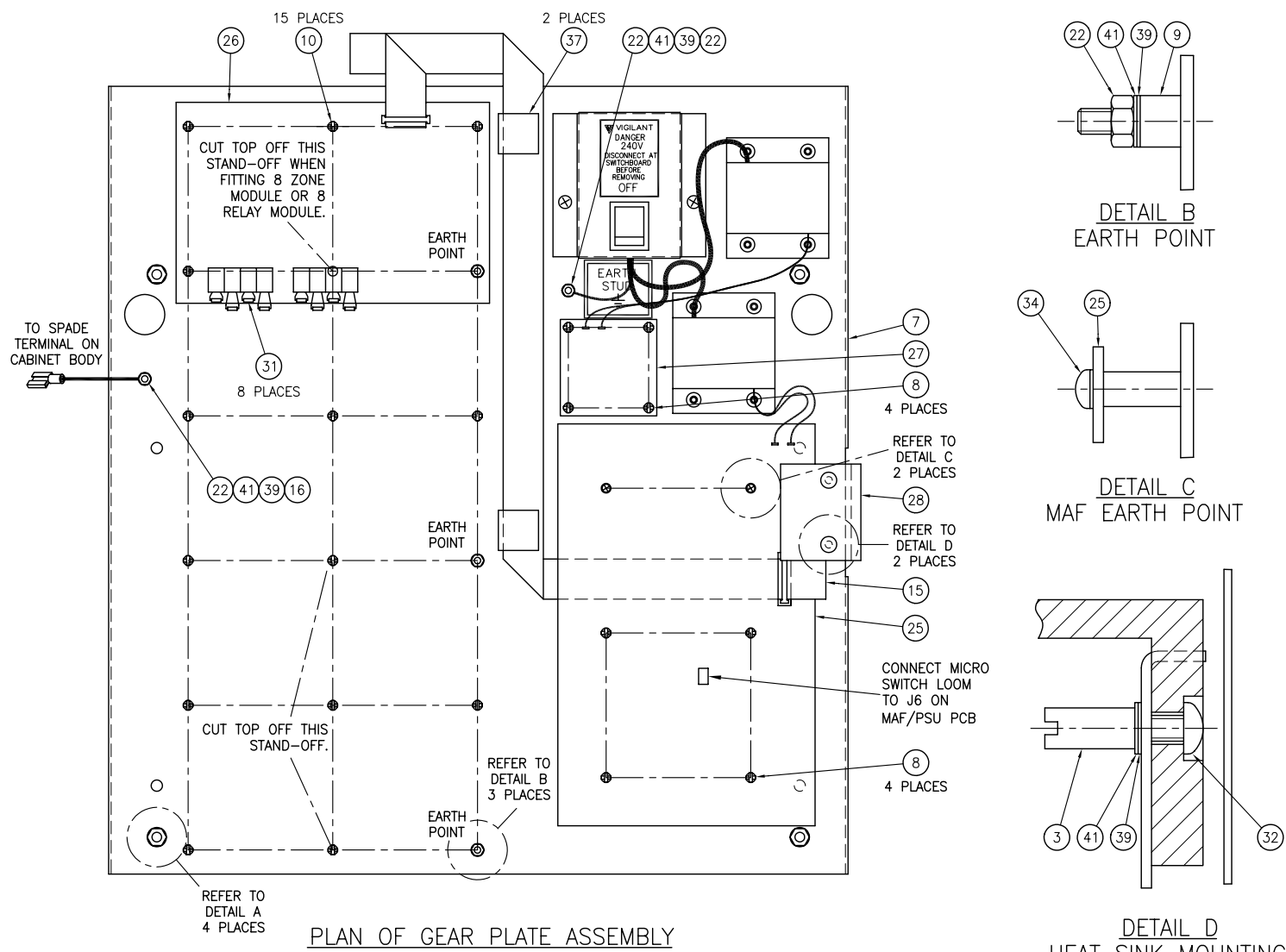
**tyco** / *Safety Products*

TYCO SAFETY PRODUCTS  
 211 MACES RD PH: +64 3 3895096  
 P.O. BOX 19545 FAX: +64 3 3895938  
 CHRISTCHURCH, NEW ZEALAND

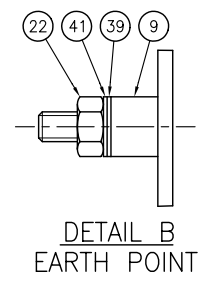
**F3200  
 6A MAF/PSU AND HEATSINK  
 ASSEMBLY DETAILS**

DRAWING No: **1931-44** SHEET 1 of 2

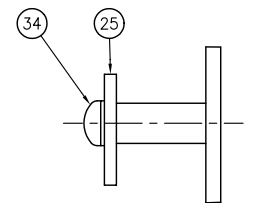
<b>A3</b>	ISS/REV <b>J</b>	PART No:
-----------	------------------	----------



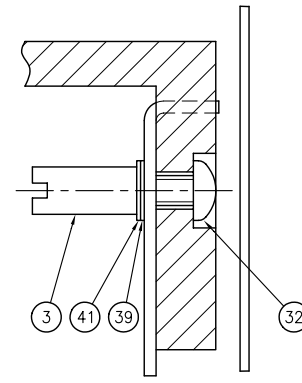
PLAN OF GEAR PLATE ASSEMBLY



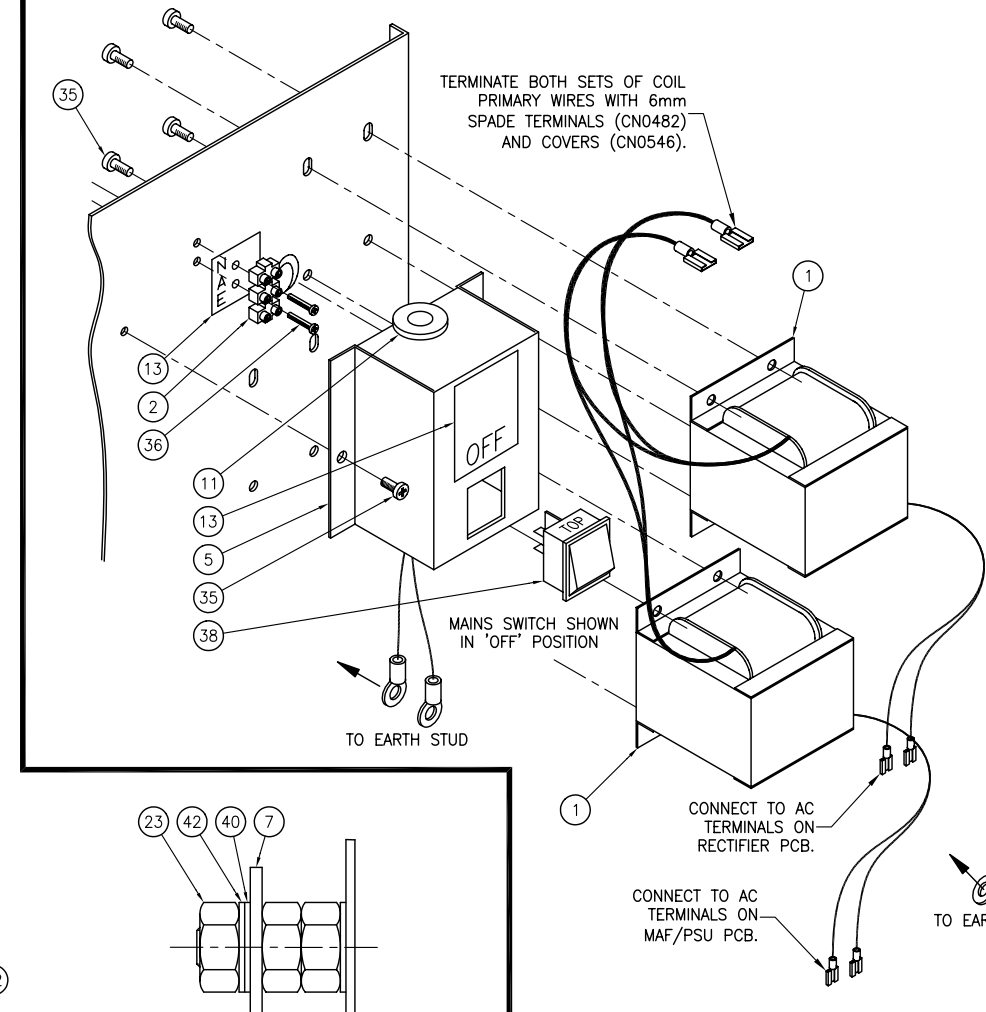
DETAIL B EARTH POINT



DETAIL C MAF EARTH POINT



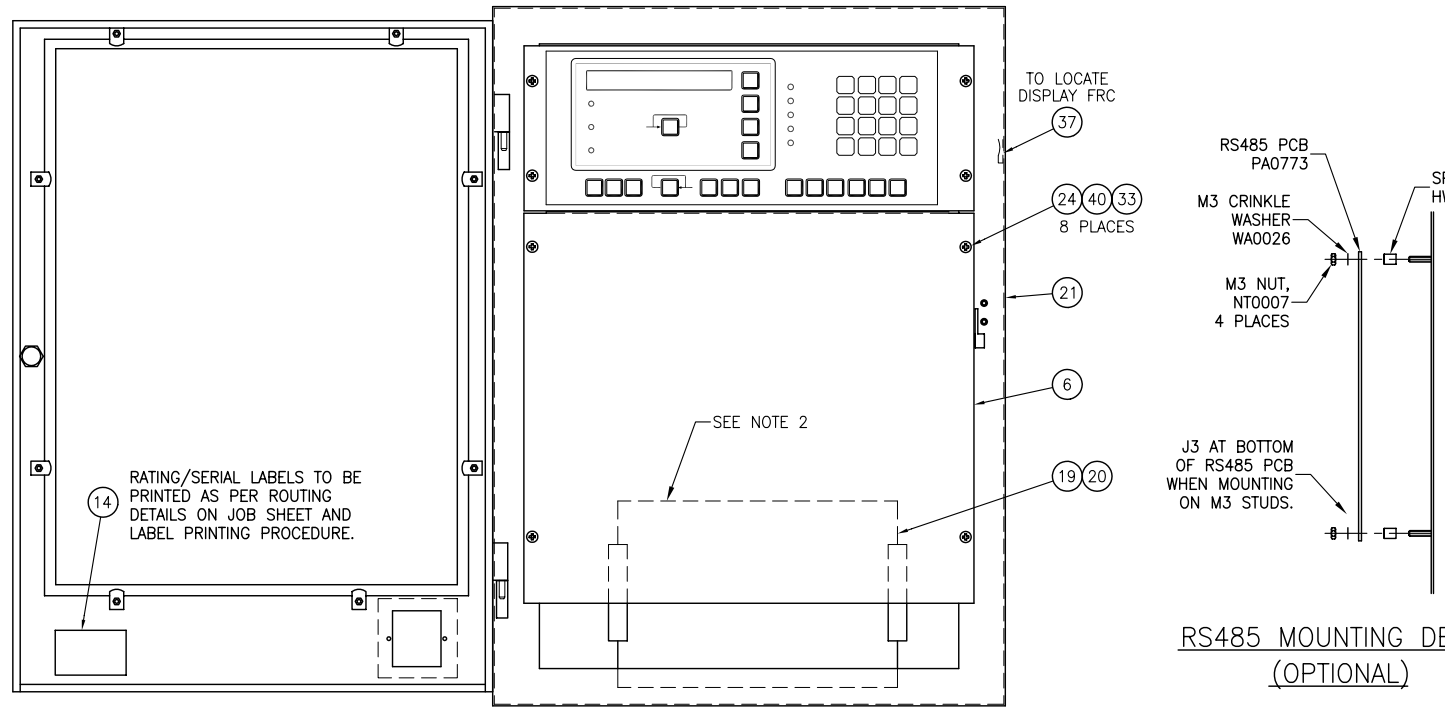
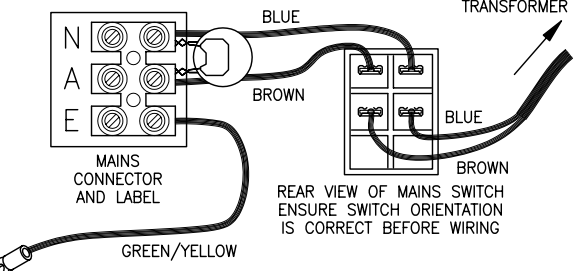
DETAIL D HEAT SINK MOUNTING



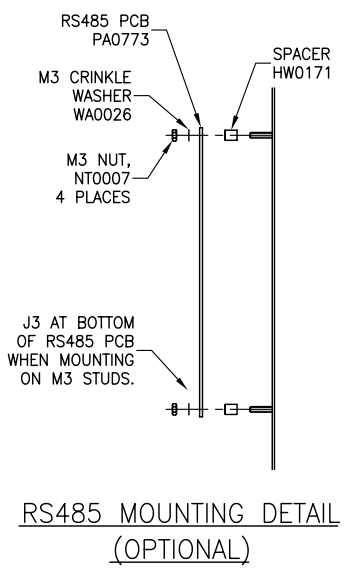
MAINS WIRING AND ASSEMBLY DETAILS



- MAINS WIRING**
1. FIT MAINS SWITCH (SW0121) TO MAINS COVER.
  2. FIT GROMMET, (HW0247), TO EACH MOUSE HOLE CUT-OUT IN MAINS COVER.
  3. FIT VARISTOR (RR0878) AND CAPACITOR (CA0012) TO MAINS CONNECTOR (CN0020) AS SHOWN BELOW. KEEP LEAD LENGTHS OF VARISTOR AND CAPACITOR TO A MINIMUM.
  4. WITH MAINS SWITCH IN 'OFF' POSITION AS SHOWN, CONNECT WIRING AS SHOWN BELOW. CUT WIRES TO LENGTH, FIT CRIMP CONNECTORS AND CRIMP AS SHOWN ABOVE.

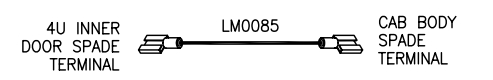


FRONT VIEW OF CABINET WITH DOOR OPEN



RS485 MOUNTING DETAIL (OPTIONAL)

ITEM	PART NO.	QTY.	DESC.
1	CL0423	2	COIL,L423,F08 MAINS,240V,31V
2	CN0020	0.25	CONNECTOR,BLOCK,380V,10A,2.5SQMM,4MM CRP,12WAY
3	FA1163	2	FAB,1901-24,F4000 BARREL NUT,M4 x 14mm,BRASS
4	FA1219	1	FAB,1931-13,F3200 4U INNER DOOR
5	FA1220	1	FAB,1931-14,F3200 MAINS ENCLOSURE
6	FA1227	1	FAB,1931-24,F3200 BLANKING PLATE,9.5U
7	FA1267	1	FAB,1931-69,F3200,19" RACK MTG,GEAR PLATE
8	HW0130	8	HARDWARE,PCB STANDOFF,PBR10
9	HW0171	3	HARDWARE,SPACER,8.3mm,4NA06N
10	HW0209	15	HARDWARE,PCB STANDOFF,PBR06
11	HW0247	2	HARDWARE,GROMMET,RUBBER,11.0mm,HOLE 16mm
12	KT0270	1	KIT,F3200 AS4428 PANEL LOOSE PARTS
13	LB0322	1	LABEL,1931-23,F3200 MAINS TERM/RATING
14	LB0374	1	LABEL,CONTINUOUS,76x48 ,POLYESTER
15	LM0083	1	LOOM,FRC,20W,STYLE C,700mm
16	LM0108	1	LOOM,1.00APP,G/Y,300mm,M4 LUG:4.8QC
17	LM0118	1	LOOM,FRC,26W,STYLE B,600mm
18	LM0209	1	LOOM,F4000 2.5A PSU,MAINS SWT LOOM SET
19	LT0120	1	LITERATURE,1931-18,F3200 OPERATOR'S MANUAL,A5
20	LT0123	1	LITERATURE,1931-21,F3200 FP CHECKLIST
21	ME0077	1	ASSY,1931-95,F3200/F4000 CABINET
22	NT0009	5	NUT,HEX MACHINE,M4,ZP
23	NT0014	4	NUT,HEX MACHINE,M6,ZP
24	NT0030	8	NUT,CAGE,M6,ZP
25	PA0874	1	PCB,ASSY,1931-4,F3200 8 ZONE MODULE
26	PA0492	1	PCB ASSY,1931-39,F3200 3A RECTIFIER BOARD
27	PA0707	1	PCB ASSY,1931-44,F3200 6A FET & RECTIFIER BRD
28	PA0810	1	PACKAGING,BAG,POLYTHENE,110 X 175
29	PK0002	1	PACKAGING,BAG,POLYTHENE,200 X 300
30	PK0004	1	RESISTOR,0.6W,1%,50PPM,D2.5mm,P10mm,2K70
31	RR0038	8	SCREW,MACHINE,PH PHIL,M4 X 16,ZP
32	SC0052	2	SCREW,MACHINE,PH POZI,M6 X 12,ZP
33	SC0058	8	SCREW,MACHINE,PH PHIL,M3 X 6,SPRING & FLAT WA
34	SC0172	10	SCREW,MACHINE,PH PHIL,M4 X 10,SPRING & FLAT WA
35	SC0176	10	SCREW,MACHINE,PH PHIL,M3 X 12,SPRING & FLAT WA
36	SC0177	2	SUNDRY,FRC CLAMP,ADHESIVE,1 IN
37	SU0151	4	SWITCH,ROCKER,DPST,6A 250VAC,ILLUMINATED
38	SW0121	1	WASHER,FLAT,M4,ZP,9MM OD, 1MM THICK
39	WA0006	12	WASHER,FLAT,M6,ZP,12MM OD, 1.2MM THICK
40	WA0008	5	WASHER,SHAKEPROOF,M4,I,T LOCK,ZP
41	WA0011	9	WASHER,SHAKEPROOF,M6,I,T LOCK,ZP
42	WA0013	4	WASHER,SHAKEPROOF,M6,I,T LOCK,ZP



DETAIL OF ADDITIONAL EARTH LEADS

- ASSEMBLY NOTES:**
1. PLACE THE FOLLOWING ITEMS INTO THE SMALL PLASTIC BAG TAPED TO THE INSIDE FLOOR OF THE CABINET CONTAINING THE MCP KEY:  
3 X BATT LEADS (KT0167),  
1 X DOMEX LABEL (FA2030),  
1 X 10A THERMAL CUTOUT (SU0159),  
30mm X 5mm HEAT SHRINK, BLACK (IN0024).
  2. PLACE THE MANUAL INTO THE LARGE PLASTIC BAG (PK0004), AND TAPE TO THE INSIDE BACK OF THE CABINET. PLACE CHECK LIST IN BOTTOM OF CABINET.
  3. CONNECT FRC LOOMS AS FOLLOWS:  
26 WAY, MAF (J1) TO CONTROLLER (J4), (LM0046)  
20 WAY, MAF (J2) TO 8 ZONE MODULE (J4), (LM0109)  
NOTE: 20 WAY CABLE NOT REQUIRED FOR RZDU.
  4. WHEN USING M6x12 SCREWS AND M6 FLAT WASHERS TO MOUNT INNER PANELS, ENSURE THE SHARP EDGES OF THE WASHER FACE TOWARD THE SCREW HEAD NOT THE FRONT PANEL.
  5. CRIMP PRIMARY LEADS OF BOTH TRANSFORMERS INTO THE SAME 6mm RECEPTACLES.
  6. MAF BOARD IS MOUNTED ON 2 METAL AND 4 PLASTIC STAND-OFFS (HW0130).
  7. FOR NETWORK PANELS THE RS485 BOARD IS MOUNTED ON THE RHS OF THE CABINET ON 4 OFF M3 STUDS.
  8. REFER TO COPY OF SLB FOR ITEM DESCRIPTIONS.

CONFIDENTIAL: THIS DOCUMENT MUST NOT BE COPIED NOR THE CONTENTS PASSED ON TO ANY THIRD PARTY WITHOUT THE CONSENT OF THE COMPANY. UNLESS OTHERWISE STATED: ALL DIMENSIONS IN MILLIMETRES. DO NOT SCALE. TOLERANCES ARE TO BE: 1 DECIMAL PLACE ±0.5, 2 DECIMAL PLACES ±0.3, 3 DECIMAL PLACES ±0.1

ISS/REV	AMENDMENTS	ECO	DRN	CHKD	AUTH	APVD	DATE
D	LOOM SET LM0209 WAS MADE ON JOB	ECS922	RMH				4-2-02
E	CN0546 ADDED TO COIL PRIMARY LEADS	ECS961	KJS				6-6-02
F	CN0020 & COIL WERE POP RIVET TO GEAR PLATE, ITEM TABLE ADDED.	8379/88	KJS	RMH	LSC	DSCP	26-3-03



F3200  
6A GEAR PLATE AND CABINET  
ASSEMBLY DETAILS

DRAWING No: 1931-44 SHEET 2 of 2  
A1 ISS/REV F PART No:

TYCO SAFETY PRODUCTS  
211 MACES RD PH: +64 3 3895096  
P.O. BOX 19545 FAX: +64 3 3895938  
CHRISTCHURCH, NEW ZEALAND