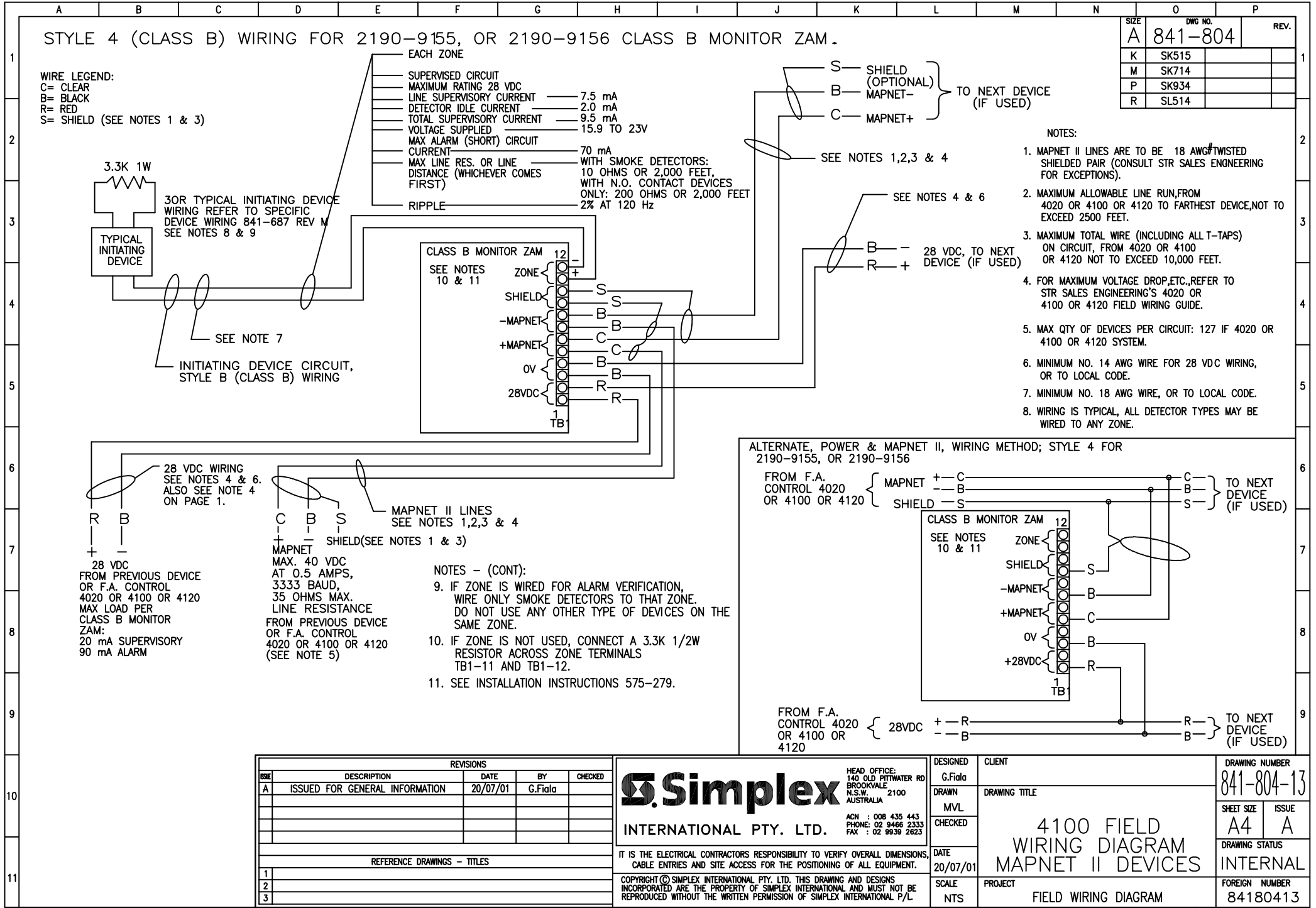


DWG LOCATION : C:\CAD FILES\Projects\MS\F\W\ PLOT DATE : 20/07/01 14:30
 RE-PLOT DATE :

DWG NAME : 84180413.dwg
 DWG DATE : 20/07/01 14:28



ALTERNATE, POWER & MAPNET II, WIRING METHOD; STYLE 4 FOR 2190-9155, OR 2190-9156

FROM F.A. CONTROL 4020 OR 4100 OR 4120

MAPNET + — C
 — B
 SHIELD — S

TO NEXT DEVICE (IF USED)

CLASS B MONITOR ZAM
 SEE NOTES 10 & 11

12
 ZONE
 SHIELD
 -MAPNET
 +MAPNET
 0V
 +28VDC
 1 TB

FROM F.A. CONTROL 4020 OR 4100 OR 4120

28VDC + — R
 — B

TO NEXT DEVICE (IF USED)

| REVISIONS | | | | |
|-----------------------------|--------------------------------|----------|---------|---------|
| REV | DESCRIPTION | DATE | BY | CHECKED |
| A | ISSUED FOR GENERAL INFORMATION | 20/07/01 | G.Fiala | |
| | | | | |
| | | | | |
| | | | | |
| REFERENCE DRAWINGS - TITLES | | | | |
| 1 | | | | |
| 2 | | | | |
| 3 | | | | |

Simplex

INTERNATIONAL PTY. LTD.

HEAD OFFICE:
 140 OLD PITTMAR RD
 BROOKVALE 2100
 N.S.W.
 AUSTRALIA

ACN : 008 435 443
 PHONE: 02 9466 2333
 FAX : 02 9939 2623

IT IS THE ELECTRICAL CONTRACTORS RESPONSIBILITY TO VERIFY OVERALL DIMENSIONS, CABLE ENTRIES AND SITE ACCESS FOR THE POSITIONING OF ALL EQUIPMENT.

COPYRIGHT © SIMPLEX INTERNATIONAL PTY. LTD. THIS DRAWING AND DESIGNS INCORPORATED ARE THE PROPERTY OF SIMPLEX INTERNATIONAL AND MUST NOT BE REPRODUCED WITHOUT THE WRITTEN PERMISSION OF SIMPLEX INTERNATIONAL P/L

| | | |
|---------------------|--|-------------------------------------|
| DESIGNED G.Fiala | CLIENT | DRAWING NUMBER 841-804-13 |
| DRAWN MVL | DRAWING TITLE | SHEET SIZE A4 |
| CHECKED | 4100 FIELD WIRING DIAGRAM MAPNET II DEVICES | ISSUE A |
| DATE 20/07/01 | | DRAWING STATUS INTERNAL |
| SCALE NTS | PROJECT FIELD WIRING DIAGRAM | FOREIGN NUMBER 84180413 |