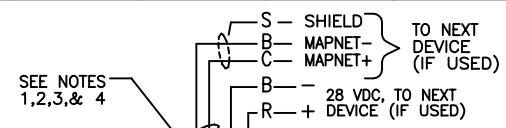
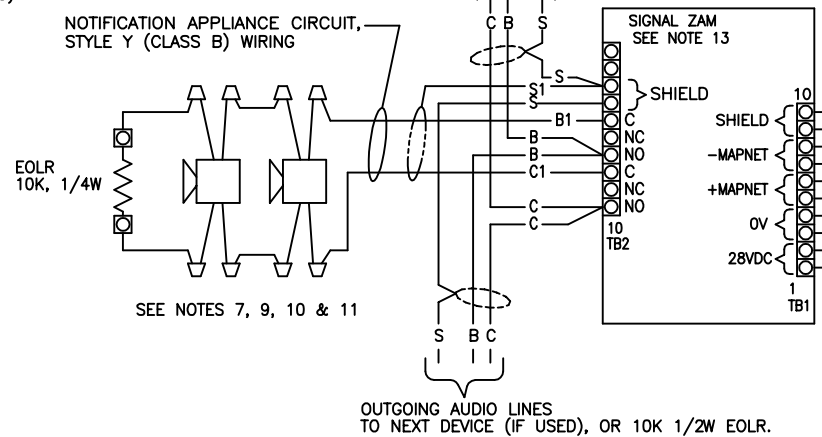


STYLE 4 (CLASS B) WIRING FOR 2190-9161, OR 2190-9162
 CLASS B SIGNAL ZAM/ WITH AUDIO SPEAKERS FOR
 50 W, 25 VRMS SYSTEM

WIRE LEGEND:
 C= CLEAR
 B= BLACK
 R= RED
 S= SHIELD (REQUIRED ON AUDIO AND SPEAKER LINES)



SIZE	DWG NO.		
A	841-804		
J	SK458		
K	SK515		
M	SK714		
R	SL514		

- NOTES:
- MAPNET II LINES ARE TO BE #8 AWG TWISTED SHIELDED PAIR (CONSULT STR SALES ENGINEERING FOR EXCEPTIONS).
 - MAXIMUM ALLOWABLE LINE RUN, FROM 4100 OR 4120 TO FARTHEST DEVICE, NOT TO EXCEED 2500 FEET.
 - MAXIMUM TOTAL WIRE (INCLUDING ALL T-TAPS) ON CIRCUIT, FROM 4100 OR 4120 NOT TO EXCEED 10,000 FEET.
 - FOR MAXIMUM VOLTAGE DROP, ETC., REFER TO STR SALES ENGINEERING'S 4100 OR 4120 FIELD WIRING GUIDE.
 - MAX QTY OF DEVICES PER CIRCUIT: 127 IF 4100 OR 4120 SYSTEM.
 - MINIMUM NO. 14 AWG WIRE FOR 28 VDC WIRING, OR TO LOCAL CODE.
 - AUDIO AND SPEAKER LINES TO BE MINIMUM NO. 18 AWG TWISTED SHIELDED PAIR.
 - TOTAL MAXIMUM POWER PER AMPLIFIER=50W AT 25 VRMS.
 - MAXIMUM POWER OF SPEAKER LOOP=50W AT 25 VRMS.

28 VDC WIRING
 SEE NOTES 4 & 6.
 ALSO SEE NOTE 4
 ON PAGE 1.

28 VDC
 FROM PREVIOUS DEVICE
 OR F.A. CONTROL 4100
 OR 4120.
 MAX LOAD PER
 CLASS B SIGNAL ZAM
 15 mA SUPERVISORY,
 40 mA ALARM

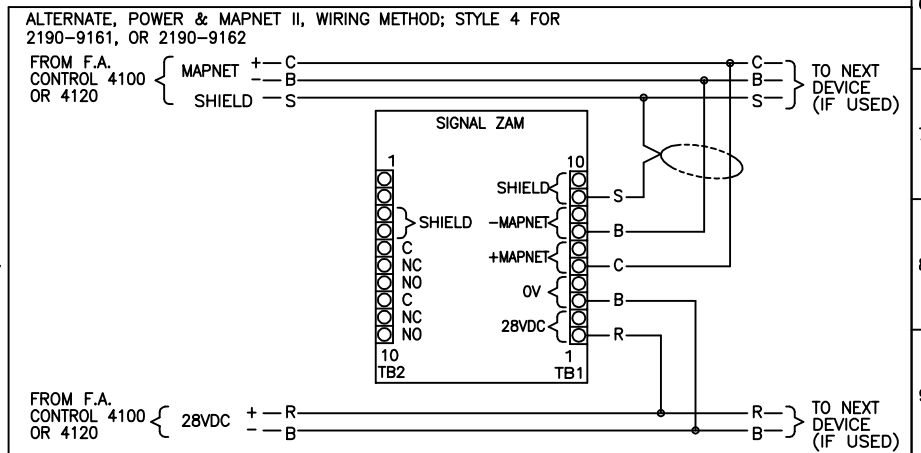
MAPNET
 MAX. 40 VDC
 AT 0.5 AMPS,
 3333 BAUD,
 35 OHMS MAX.
 LINE RESISTANCE
 FROM PREVIOUS DEVICE
 OR F.A. CONTROL
 4100 OR 4120. (SEE NOTE 5)

NOTES:

- SPEAKER CIRCUIT WIRING DISTANCES WITH MAXIMUM LOSS OF 3 DB AT SPEAKER:
- SPEAKERS= LISTED FIRE PROTECTIVE SIGNALING SPEAKER, RATED FOR 25 V P.A. LINE.
- ALL CONNECTIONS MUST TEST FREE OF GROUNDS.
- SEE INSTALLATION INSTRUCTIONS 575-279.

DESIRED POWER	ACTUAL POWER	MAX. DISTANCE IN FEET (TWISTED PAIR WIRE)		
		18 AWG	16 AWG	14 AWG
50 W	25 W	395	680	1000
25 W	12.5 W	785	1255	1995
20 W	10 W	985	1570	2000
15 W	7.5 W	1300	2000	2000
10 W	5 W	1985	2000	2000

MAXIMUM LINE DISTANCE= 2000 FEET



DWG LOCATION : C:\CAD FILES\Projects\MS\F\W
 PLOT DATE : 07/09/01 11:16
 RE-PLOT DATE :
 DWG NAME : 84180419.dwg
 DWG DATE : 07/09/01 9:24
 CAD DRAWING - DO NOT HAND MODIFY

REVISIONS				
NO.	DESCRIPTION	DATE	BY	CHECKED
A	ISSUED FOR GENERAL INFORMATION	20/07/01	G.Fiala	
REFERENCE DRAWINGS - TITLES				
1				
2				
3				

Simplex
 INTERNATIONAL PTY. LTD.

HEAD OFFICE:
 140 OLD PITWATER RD
 BROOKVALE, 2100
 N.S.W., AUSTRALIA

ACN : 008 435 443
 PHONE: 02 9466 2333
 FAX : 02 9639 2623

IT IS THE ELECTRICAL CONTRACTORS RESPONSIBILITY TO VERIFY OVERALL DIMENSIONS, CABLE ENTRIES AND SITE ACCESS FOR THE POSITIONING OF ALL EQUIPMENT.

COPYRIGHT © SIMPLEX INTERNATIONAL PTY. LTD. THIS DRAWING AND DESIGNS INCORPORATED ARE THE PROPERTY OF SIMPLEX INTERNATIONAL AND MUST NOT BE REPRODUCED WITHOUT THE WRITTEN PERMISSION OF SIMPLEX INTERNATIONAL P/L

DESIGNED G.Fiala	CLIENT	DRAWING NUMBER 841-804-19
DRAWN MVL	DRAWING TITLE 4100 FIELD WIRING DIAGRAM MAPNET II DEVICES	SHEET SIZE A4
CHECKED	PROJECT FIELD WIRING DIAGRAM	ISSUE A
DATE 20/07/01	SCALE NTS	DRAWING STATUS INTERNAL
		FOREIGN NUMBER 84180419