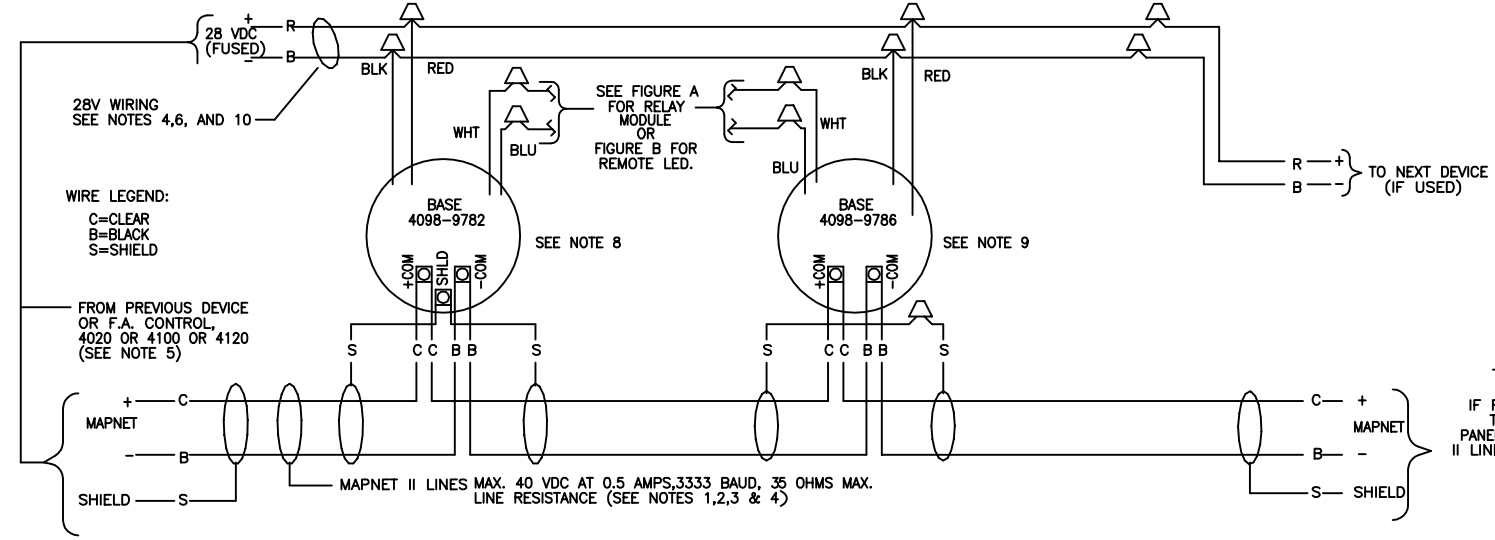


STYLE 4 (CLASS B) & STYLE 6 (CLASS A) WIRING FOR 4098-9782 AND 4098-9786 BASES

|      |           |  |
|------|-----------|--|
| SIZE | A 841-804 |  |
| K    | SK515     |  |
| P    | SK934     |  |
| Q    | SL292     |  |
| R    | SL514     |  |
| S    | SM467     |  |



TO NEXT DEVICE  
OR  
IF FROM LAST DEVICE,  
TO F.A. CONTROL  
PANEL SECONDARY MAPNET  
II LINES (CLASS A ONLY).

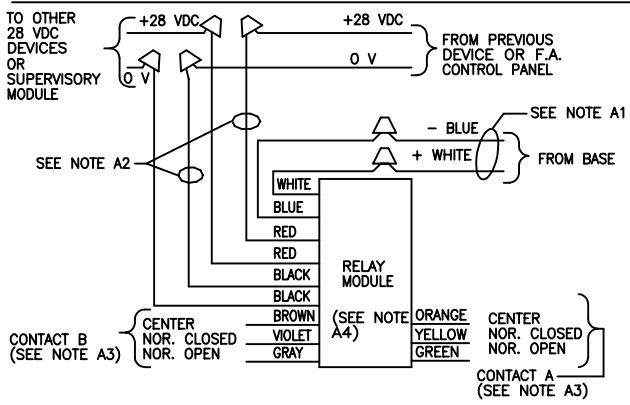
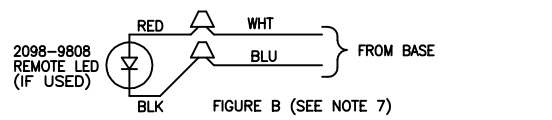
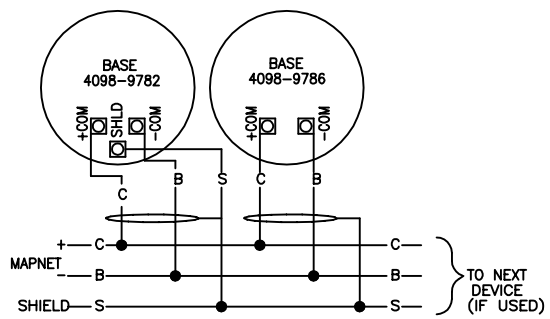
NOTES:

- MAPNET II LINES ARE TO BE #18 AWG TWISTED SHIELDED PAIR (CONSULT STR SALES ENGINEERING FOR EXCEPTIONS).
- MAXIMUM ALLOWABLE LINE RUN, FROM PANEL TO FARTHEST DEVICE, NOT TO EXCEED 2500 FEET.
- MAXIMUM TOTAL WIRE (INCLUDING ALL T-TAPS) ON CIRCUIT, FROM PANEL NOT TO EXCEED 10,000 FEET (CLASS B ONLY).
- FOR MAXIMUM VOLTAGE DROP, ETC., REFER TO STR SALES ENGINEERING'S 4020 OR 4100 OR 4120 FIELD WIRING GUIDE.
- MAXIMUM DEVICES: 4020 OR 4100 OR 4120-NON-CODED: 127  
CODED: 43 CODED SOUNDERS  
REMAINING 84 ADDRESSES AVAILABLE FOR NON-CODED SOUNDERS AND OTHER DEVICES.
- MIN #14 AWG FOR 28 VDC WIRING, OR TO LOCAL CODE.
- REMOTE LED WIRING OR RELAY MODULE 4098-9822 OR -9804 WIRING IS UNSUPERVISED.
- SEE INSTALLATION INSTRUCTIONS 574-663.
- SEE INSTALLATION INSTRUCTIONS 574-697.
- 280uA SUPERVISORY, 15mA ALARM MAX PER BASE.

NOTES:

- DO NOT USE A REMOTE LED.
  - 18 TO 32 VDC, .008 AMPS TYPICAL, .013 AMPS MAX.
  - CONTACT A OR B: DRY, FORM C, EACH RATED 2 AMPS RESISTIVE AT 24 VDC, OR 0.5 AMPS RESISTIVE AT 110 VAC.
  - USE 4098-9822 OR 4098-9804 RELAY WITH 4098-9782 BASE. ONLY USE 4098-9822 RELAY WITH 4098-9786 BASE.
- RELAY MODULE CONNECTIONS (IF USED)  
FIGURE A (SEE NOTE 7)

ALTERNATE WIRING METHOD, STYLE 4 (CLASS B)



| REVISIONS                   |                                |          |         |         |
|-----------------------------|--------------------------------|----------|---------|---------|
| REV                         | DESCRIPTION                    | DATE     | BY      | CHECKED |
| A                           | ISSUED FOR GENERAL INFORMATION | 23/07/01 | G.Fiala |         |
|                             |                                |          |         |         |
|                             |                                |          |         |         |
|                             |                                |          |         |         |
| REFERENCE DRAWINGS - TITLES |                                |          |         |         |
| 1                           |                                |          |         |         |
| 2                           |                                |          |         |         |
| 3                           |                                |          |         |         |

**Simplex**  
INTERNATIONAL PTY. LTD.

HEAD OFFICE:  
140 OLD PITWATER RD  
BROOKVALE 2100  
N.S.W.  
AUSTRALIA

ACN : 008 435 443  
PHONE: 02 9466 2333  
FAX : 02 9639 2623

IT IS THE ELECTRICAL CONTRACTORS RESPONSIBILITY TO VERIFY OVERALL DIMENSIONS, CABLE ENTRIES AND SITE ACCESS FOR THE POSITIONING OF ALL EQUIPMENT.

COPYRIGHT © SIMPLEX INTERNATIONAL PTY. LTD. THIS DRAWING AND DESIGNS INCORPORATED ARE THE PROPERTY OF SIMPLEX INTERNATIONAL AND MUST NOT BE REPRODUCED WITHOUT THE WRITTEN PERMISSION OF SIMPLEX INTERNATIONAL P/L

|                     |  |                              |
|---------------------|--|------------------------------|
| DESIGNED<br>G.Fiala | CLIENT   | DRAWING NUMBER<br>841-804-30 |
| DRAWN<br>MVL        | DRAWING TITLE                                  | SHEET SIZE<br>A4             |
| CHECKED             | 4100 FIELD WIRING DIAGRAM<br>MAPNET II DEVICES | ISSUE<br>A                   |
| DATE<br>23/07/01    | PROJECT<br>FIELD WIRING DIAGRAM                | DRAWING STATUS<br>INTERNAL   |
| SCALE<br>NTS        |  | FOREIGN NUMBER<br>84180430   |

DWG LOCATION : C:\CAD FILES\Projects\MS/F/W/ PLOT DATE : 23/07/01 9:04  
 RE-PLOT DATE :  
 DWG NAME : 84180430.dwg  
 DWG DATE : 23/07/01 8:31