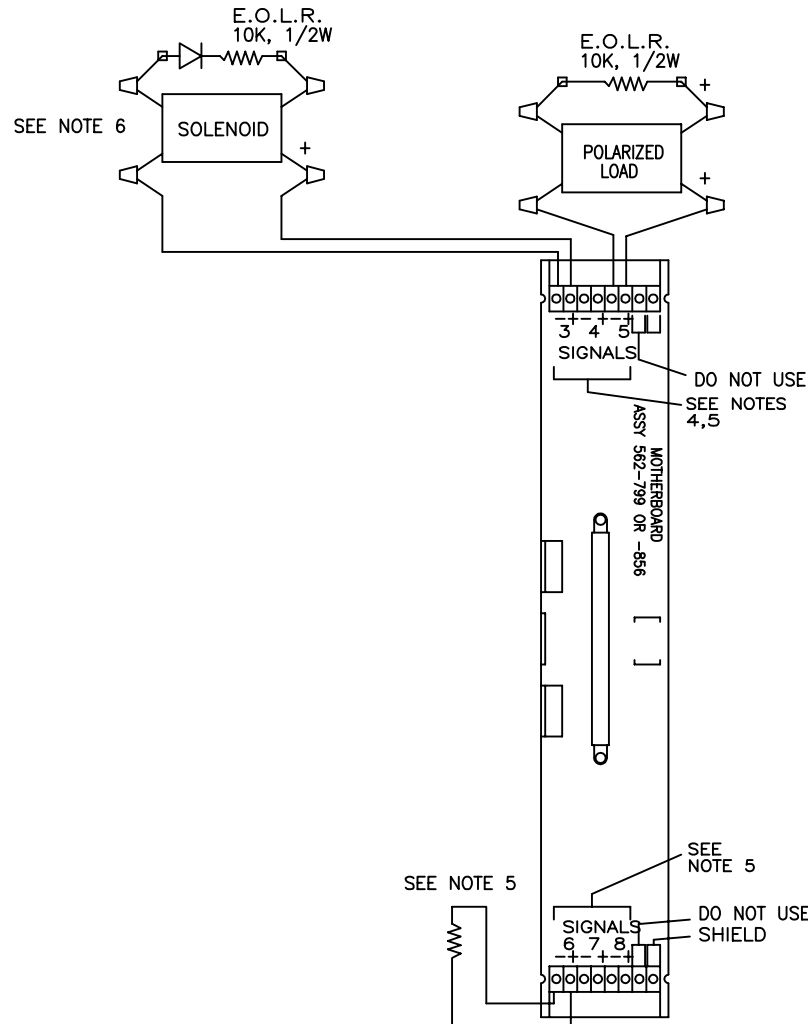


SUPERVISED SIGNAL CIRCUIT

SIZE	DWG NO.
A	841-731
AL	SL393



NOTES:

1. ALL WIRING TO BE MINIMUM 1.5 mm² TWISTED SHIELDED PAIR OR TO LOCAL CODE.
2. CONDUCTORS MUST BE FREE OF ALL GROUNDS.
3. ALL WIRING IS SUPERVISED UNLESS OTHERWISE NOTED. SUPERVISORY POWER: 2.4 mA @ 24 V DC.
4. WIRING SAME AS SIGNAL 3.
5. IF CIRCUIT IS NOT USED, PLACE 10K, 1/2W E.O.L.R. FROM SIG+ TO SIG- TERMINALS.
6. BLOCKING DIODE - (IN4004) - REQUIRED WHEN SWITCHING NON-POLARIZED LOADS.

REVISIONS				
REV	DESCRIPTION	DATE	BY	CHECKED
A	ISSUED FOR GENERAL INFORMATION	01/08/01	G.Fiala	
REFERENCE DRAWINGS - TITLES				
1				
2				
3				

Simplex
INTERNATIONAL PTY. LTD.

HEAD OFFICE:
140 OLD PITTSWATER RD
BROOKVALE
N.S.W. 2100
AUSTRALIA

ACN : 008 435 443
PHONE: 02 9466 2333
FAX : 02 9939 2623

IT IS THE ELECTRICAL CONTRACTORS RESPONSIBILITY TO VERIFY OVERALL DIMENSIONS, CABLE ENTRIES AND SITE ACCESS FOR THE POSITIONING OF ALL EQUIPMENT.

COPYRIGHT © SIMPLEX INTERNATIONAL PTY. LTD. THIS DRAWING AND DESIGNS INCORPORATED ARE THE PROPERTY OF SIMPLEX INTERNATIONAL AND MUST NOT BE REPRODUCED WITHOUT THE WRITTEN PERMISSION OF SIMPLEX INTERNATIONAL P/L

DESIGNED G.Fiala	CLIENT	DRAWING NUMBER 841A-731-04
DRAWN MVL	DRAWING TITLE 4100 FIELD WIRING DIAGRAM	SHEET SIZE A4
CHECKED	DATE 01/08/01	ISSUE A
SCALE NTS	PROJECT FIELD WIRING DIAGRAM	DRAWING STATUS INTERNAL
		FOREIGN NUMBER 84173139

DWG LOCATION : C:\CAD FILES\4100\Field Wiring\ PLOT DATE : 07/09/01 13:32
RE-PLOT DATE :

DWG NAME : 841-731-39.dwg
DWG DATE : 07/09/01 13:30