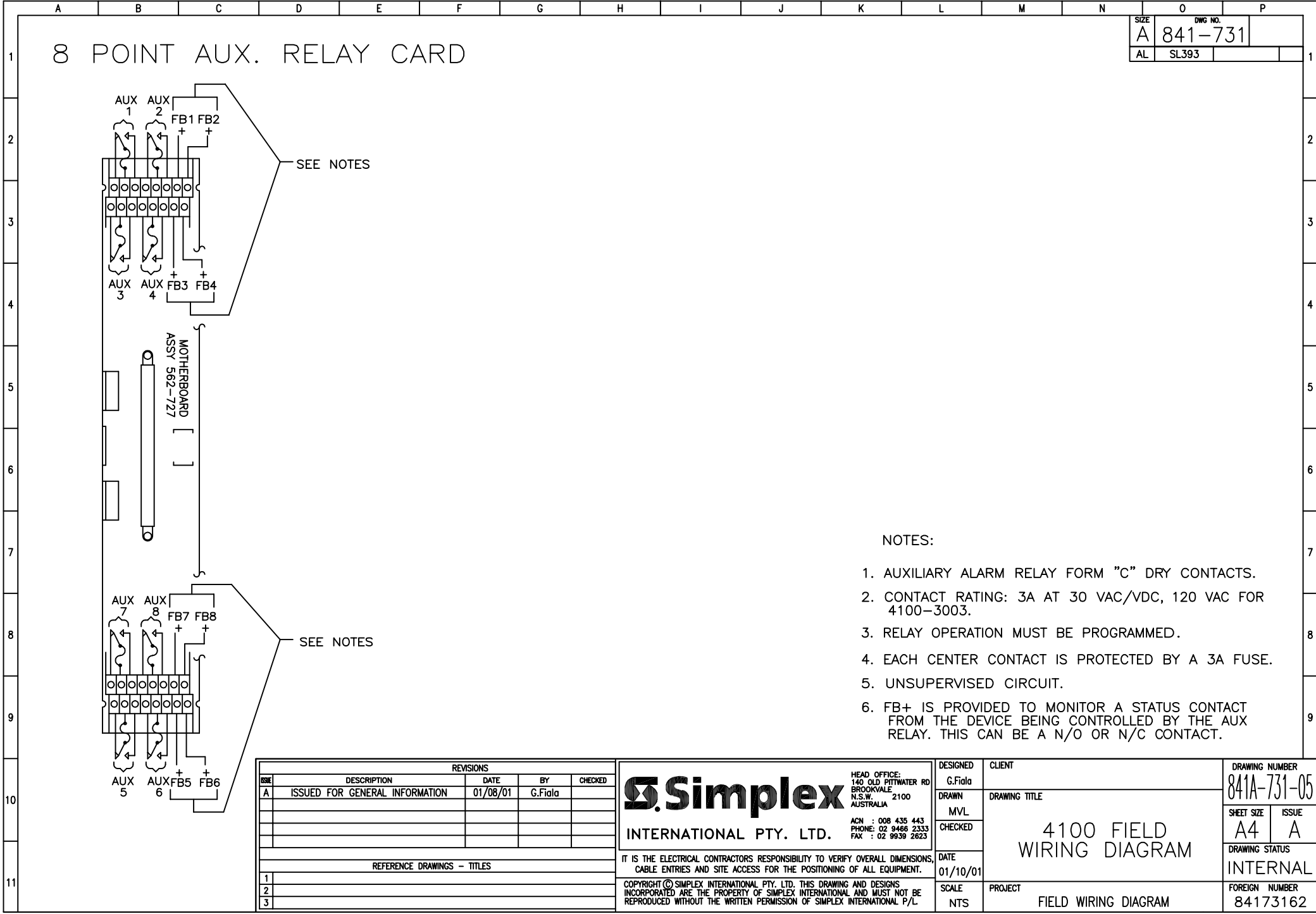


DWG LOCATION : C:\CAD FILES\4100\Field Wiring\ PLOT DATE : 07/09/01 13:34  
 RE-PLOT DATE :  
 DWG NAME : 841-731-62.dwg  
 DWG DATE : 07/09/01 13:33



# 8 POINT AUX. RELAY CARD

SIZE	DWG NO.
A	841-731
AL	SL393

SEE NOTES

SEE NOTES

**NOTES:**

1. AUXILIARY ALARM RELAY FORM "C" DRY CONTACTS.
2. CONTACT RATING: 3A AT 30 VAC/VDC, 120 VAC FOR 4100-3003.
3. RELAY OPERATION MUST BE PROGRAMMED.
4. EACH CENTER CONTACT IS PROTECTED BY A 3A FUSE.
5. UNSUPERVISED CIRCUIT.
6. FB+ IS PROVIDED TO MONITOR A STATUS CONTACT FROM THE DEVICE BEING CONTROLLED BY THE AUX RELAY. THIS CAN BE A N/O OR N/C CONTACT.

REVISIONS				
REV	DESCRIPTION	DATE	BY	CHECKED
A	ISSUED FOR GENERAL INFORMATION	01/08/01	G.Fiala	
REFERENCE DRAWINGS - TITLES				
1				
2				
3				

**Simplex**  
 INTERNATIONAL PTY. LTD.

HEAD OFFICE:  
 140 OLD PITTSWATER RD  
 BROOKVALE, 2100  
 N.S.W. AUSTRALIA

ACN : 008 435 443  
 PHONE: 02 9466 2333  
 FAX : 02 9939 2623

IT IS THE ELECTRICAL CONTRACTORS RESPONSIBILITY TO VERIFY OVERALL DIMENSIONS, CABLE ENTRIES AND SITE ACCESS FOR THE POSITIONING OF ALL EQUIPMENT.

COPYRIGHT © SIMPLEX INTERNATIONAL PTY. LTD. THIS DRAWING AND DESIGNS INCORPORATED ARE THE PROPERTY OF SIMPLEX INTERNATIONAL AND MUST NOT BE REPRODUCED WITHOUT THE WRITTEN PERMISSION OF SIMPLEX INTERNATIONAL P/L

DESIGNED G.Fiala	CLIENT	DRAWING NUMBER 841A-731-05
DRAWN MVL	DRAWING TITLE 4100 FIELD WIRING DIAGRAM	SHEET SIZE A4
CHECKED	DATE 01/10/01	ISSUE A
SCALE NTS	PROJECT FIELD WIRING DIAGRAM	DRAWING STATUS INTERNAL
		FOREIGN NUMBER 84173162