



Simplex[®] 4190 TrueSite[™] Workstation (TSW) Software Upgrade Instructions

Introduction

This publication describes the software upgrade procedure for the Simplex[®] 4190 TrueSite[™] Workstation (TSW).

Inspecting Contents of Shipment

Upon unpacking your Simplex[®] product, inspect the contents of the carton for shipping damage. If damage is apparent, immediately file a claim with the carrier and notify your local Simplex product supplier.

In this Publication

This publication discusses the following topics:

Topic	See Page
Cautions and Warnings	2
Installing the Software	3
Backing Up a Job	3
PC Set-Up	3
Installing an Additional 512MB DIMM RAM	4
Installing the 4190 TSW Software	5
Restoring a Backed-Up Job	6
Opening the GCC/IMS Node with the TSW Configurator	6
Configuring the Registry	7
Building a Job	7

Cautions and Warnings

READ AND SAVE THESE INSTRUCTIONS. Please follow the upgrade instructions below. Following these instructions avoids damage to this product and its associated equipment. The product operation and reliability depend upon proper installation.



ELECTRICAL HAZARD - Disconnect electrical field power when making any internal adjustments or repairs. All repairs should be performed by a representative or authorized agent of your local Simplex product supplier.



STATIC HAZARD - Static electricity can damage components. Therefore, handle as follows:

- Ground yourself before opening or installing components.
 - Prior to installation, keep components wrapped in anti-static material at all times.
-

Installing the Software

Follow the six steps below to upgrade software for the TSW.

NOTE: Throughout this document, the term “Network Programmer” refers to the new 4120 Network Programmer which has been upgraded to support TSW nodes. The new Network Programmer retains GCC/IMS compatibility.

Backing up a Job

Backup creates a compressed version of the job and stores it as a *read/write* version of the job on either a removable storage medium or a remote disk.

1. Follow these steps to back up a job:
 - a. Start the Network Programmer; highlight the network containing the existing node, click the Utility menu, and select the Backup option.
A dialog, similar to the one shown in Figure 1, appears.
 - b. Type in or browse to the destination drive and directory.
If you want to include existing reports and history logs, check off the Reports and History Log fields under “Include.”
 - c. Click the **OK** button and then the **OK** button again after verifying the information in the Backup Comment dialog box.

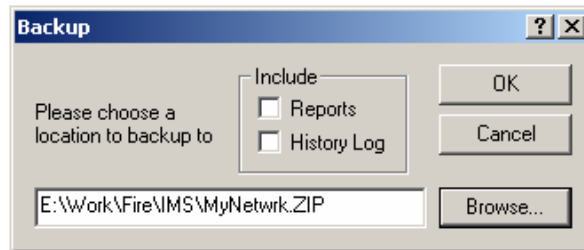


Figure 1. Backup Dialog

PC Set-Up

2. If Windows® XP operating system software must be installed on your computer, follow the instructions given in the Microsoft™ documentation for this product. Refer to article ID 316941 in www.microsoft.com, if documentation is not available. After the Windows® XP operating system has been installed, modify the computer for TSW operation in the following manner.

If retaining existing hardware, keep IRQ settings as is. If upgrading existing hardware, refer to *Simplex TrueSite Workstation - Installation & Checkout Instructions (579-834)* for IRQ setting information. The following information applies to all stations (including Comark and other commercial PCs).

BIOS Setup: Modify the BIOS Setup as follows:

- a. During initialization, enter the BIOS Setup by pressing the **DEL** key.
- b. Select **PNP/PCI Configuration**.
- c. Change IRQ 11 to Reserved.
- d. Press **<ESC>** (“Save Changes and Exit”).

Taskbar: Modify the Taskbar as follows:

- a. Click the **Start** button and select **Settings**, then **Taskbar**, and **Start Menu**.
- b. Remove Checkmark (✓) from “Always on top.”

Installing the Software, *Continued*

- Display:** Set the Display options as follows:
- a. Click the **Start** button and select **Settings**, then the **Control Panel** menu.
 - b. Double-click the **Display** icon.
 - c. Under the **Settings** tab, set the “Desktop Area” to **1024 by 768 pixels (or greater)**. Click **Apply**.
Windows[®] will ask you to view the new test setting; then make the change.
 - d. Under the **Screen Saver** tab, set the Screen Saver selection to **(None)**. (*Alarm messages on the computer screen cannot be seen when the Screen Saver is running.*)
-

Installing an Additional 512MB DIMM RAM

NOTE: This section is only relevant if you are upgrading an IMS Comark PC to run the TSW Runtime application and TSW Configurator. Otherwise, if your Comark PC is up to date with the manufacturing implementation of new PC specifications, ignore the following instructions.

In order to successfully run the TSW Runtime application and TSW Configurator on a Comark PC with existing IMS, you must upgrade it by adding an additional 512MB DIMM RAM. The amount of RAM required by the TSW is 1GB.

3. To install the TrueSite Workstation Software, complete the following steps:
 - a. Shut down the Comark PC.
 - b. Disable the power supply of the Comark PC by pushing switch situated at the back of its tower.
 - c. Strip off the case of the tower by doing the following:
 1. Remove the screws in the back of the unit. Keep them in a bag or a container to avoid losing them.
 2. Once the screws are removed, slide the case forward.
 3. Lift up the case to expose the components inside the PC tower.
 - d. Locate the Single Board Computer (SCB); is in the second slot.

NOTE: The RAM slots are situated on top of the board. Normally, there is a DIMM unit in the top slot.

- e. Install the RAM:
 1. Make a note of how the existing unit looks.
 2. Locate the little notches on the pin-side of the module. These notches (usually two) are lined up with keys on the memory socket itself to ensure proper alignment.
 3. With the ejector clips in the open position, place the module over the slot and press it in. You must apply pressure and also support the back side of the SBC. As you press down, the module will sink into place and the ejector clips will close themselves to lock the module into place.

NOTE: Before you put the case back on, make sure that the amount of RAM tallies properly.

- f. After verifying that the new RAM amount in the Comark, put the case back on and secure it with the screws.

Installing the Software, *Continued*

Installing the 4190 TSW Software

NOTES:

- a. First, install the TrueSite Workstation Runtime application and TSW Configurator (both are included in the TrueSite Workstation installation CD).
- b. The Network Programmer should be installed only after the TSW. For detail on how to install the Network Programmer, refer to *4120 Network Programmer – Installation and Programming Instructions (579-166)*.

The TrueSite Workstation software comes on a CD. The TSW TrueSite Workstation CD also contains the TSW Configurator.

The TSW software is easy to install and requires less than 20 Megabytes of free disk space on the target system. Minimum space requirements are automatically verified during installation and the installation process is terminated if the minimum system requirements are not met.

4. To install the TrueSite Workstation Software, complete the following steps:
 - a. Insert CD into the CD-ROM drive. In the majority of cases, the installation should start automatically. If such is the case, you can jump to step c; otherwise go to step b.
 - b. If auto-run is disabled, you must start the installation procedure through these extra steps:
 1. From the Windows® XP Start menu, select Run. The system displays a command line dialog box.
 2. On the command line, type **D: TrueSite Workstation.exe** (where D: is the CD drive letter) and select **OK**. The system displays the message Install Shield dialog box.
 - c. Follow the on-screen instructions to install the TSW software.

During the installation, you may get messages such as, “The following file is already installed on your system.”, “Do you wish to overwrite this file?”, or “Read only file detected.” In all such cases, press the **Yes to all** button, or if there is no **Yes to all** button, then press the **Yes** button to overwrite all existing files.

NOTE: The RUNTIME NODE option has been eliminated because all systems now will require the Programmer for setting up drivers.

- d. Remove the CD from the drive and store it in a safe place for future use.
- e. Restart the computer by choosing **Shutdown** from the **Start** menu.
- f. To start the TrueSite Workstation upon computer power-up, place the TSW Runtime shortcut in the “All Users start up” folder.
- g. To prevent the TSW Runtime from starting, hold down the shift key when starting Windows®.
- h. Right click on the TrueSite Workstation or TrueSite Workstation Configurator shortcuts on the computer. Check in Start-Programs-Simplex-TSW, In the Start-Programs-Startup, on the desktop, or any other created place. Select Properties and ensure that “Run in separate memory space” is checked.

Installing the Software, *Continued*

Restoring a Backed-Up Job

This is done using the Network Programmer, and not the TSW Configurator. The Network Programmer must be installed before this step can be performed. Restore allows previously backed-up jobs to be retrieved for subsequent viewing or editing.

5. To restore a backed-up job, follow these steps:
 - a. Click the **Utilities** menu and select the **Restore** option.
A dialog, similar to the one shown in Figure 2, appears.

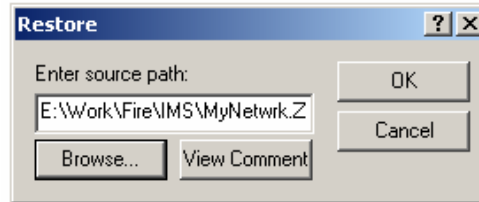


Figure 2. Restore Dialog

- b. Type in or browse to the destination drive and directory.
 - c. Click the **OK** button.

If a file by the same name exists in the target directory, a prompt appears asking if you want to overwrite the file. Click the **Yes** button to overwrite the file.

Opening the GCC or IMS Node with the TSW Configurator

6. Follow the steps below to upgrade a GCC or IMS to TSW:
 - a. Start the Network Programmer.
 - b. If it is not already there, set the path for the TrueSite Workstation Configurator in the Utilities-Programmer directories menu to C:\Simplex\TrueSite\TSW\Config.
 - c. Open the network and upgrade the GCC/IMS node by selecting the node and then right-clicking on **Upgrade**.

NOTE: A log file (upgrade.log) will be generated during the upgrade. This file will record names of all IMS graphic files that are successfully upgraded. It will reside under the job's GRAPHICS folder.

- d. Save the GCC/IMS as a TSW by clicking **File-Save**.

A dialog, similar to Figure 3, appears to prompt you to click the **Apply** button.

Installing the Software, *Continued*

Configuring the Registry

At this point, you need to configure the registry from the Programmer.

7. Follow the steps below to configure the registry:
 - a. Start the Programmer and click **Configure**.
 - b. Next, click **Registry Configuration**. A confirmation dialog appears, click the **Apply** button.

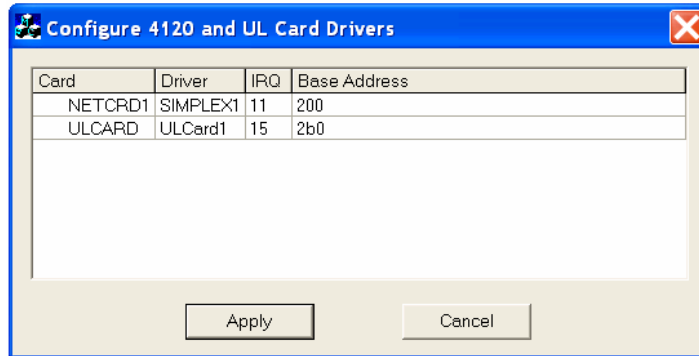


Figure 3. Registry Configuration Dialog

- c. Click the **Apply** button to complete the Registry Configuration.
 - d. Remember to re-boot the computer after exiting the TSW and the Network Programmer.
-

Building a Job

You must first build the job, in order for it to be set as the active job on this computer. If errors are detected by the build operation, they are flagged and the build operation aborts. These errors must be resolved before the build can be performed. Contact your local Simplex representative for help in resolving build errors.

8. Follow the steps below to build the job.
 - a. Start the Programmer and click **Utilities**.
 - b. Next, click **Job Builder**.

This job will be loaded when you start TSW Runtime.
