

CP820

Generation 6 *MX*
Detection Range
Manual Call Point

Features

- // Compatible with *MX* Addressable Loop on SIMPLEX 4100ESi, VIGILANT *MX1* and VIGILANT MX4428 panels
- // *MX* Addressable Manual Call Point
- // Red LED Status Indication
- // ActivFire Listing
- // Compact, Modern Styling
- // Test Key for Fast Testing
- // Optional Plastic Cover

Description

The CP820 *MX* Addressable flush mounting Manual Call Point has a plastic coated frangible element to ensure safe and reliable operation, producing no dangerous glass shards. A back box is available for surface mounting.

The CP820 is operated by simply pressing on the centre of the frangible element until it snaps. A hammer, or other impact device, is not required. The snapped frangible element releases a microswitch, which signals an alarm to the Tyco *MX* Control and Indicating Equipment (CIE).

The integral red LED indicator will illuminate when an alarm is registered and may be programmed to blink when the CP820 is polled by the CIE.

A transparent hinged cover can be fitted to help provide tamper protection. The cover must be lifted before the MCP can be operated.

The MCP can be tested by inserting the plastic test key into the base of the MCP and pulling down.



Specifications

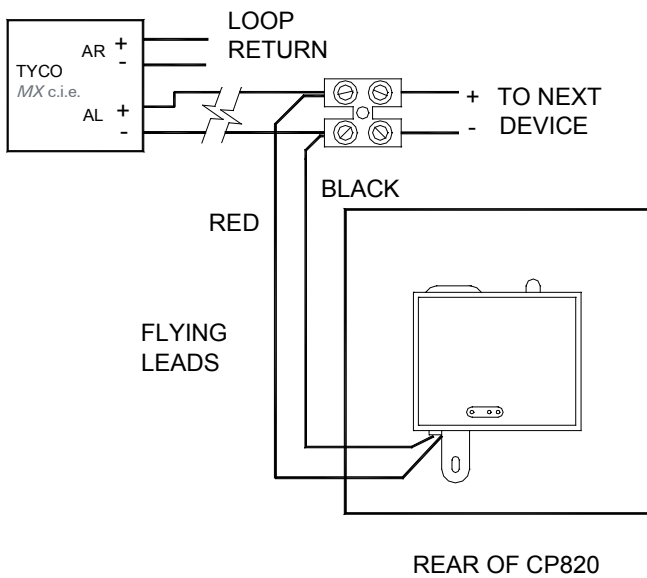
Loop Voltage ¹	20V to 40Vdc
Quiescent Current	275µA
Alarm State Current	2.8mA
Max. CP820 / Loop ²	200/250
Environment	Indoor Application only
Ambient Temperature	-10°C to +55°C
Storage Temperature	-30°C to +70°C
Relative Humidity	10% to 95% (non cond.)
Ingress Protection	IP24D
Dimensions (HWD)	93 x 89 x 45mm
ActivFire Listing	afp-1503 (AS1603.5-1996)

Part Numbers

CP820	Manual Call Point - no back box
SU0632	Surface Mounting Back Box
5 15.001.025	Frangible Glass Element (packet of 5)
5 15.001.127	Flexible Plastic Element
SC070	Test Key (packet of 10)
SU0615	Transparent Hinged Cover

1. Addressable loop voltage provided by *MX* CIE.

2. MX4428/*MX1*; 4100ESi. Refer to appropriate CIE manual for design specifications.



Front View with the front cover and frangible element removed



Programming Port



Rear View

Wiring

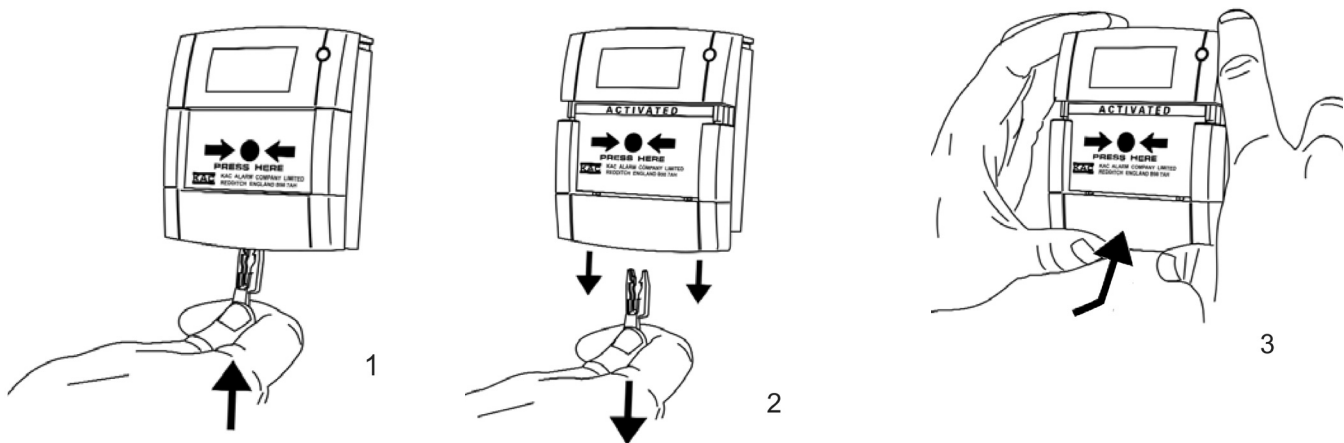
The CP820 is wired as shown. Use WECO 324-HDS or similar terminal block.

Address Setting

The CP820 is shipped with a default (invalid) address of 255 and must be programmed to the correct loop address using the *MX Service Tool*. The Service Tool is connected to the CP820 at the programming port.

Testing

A test key is provided with each MCP to allow easy testing of its mechanism and wiring without breaking the frangible element. The key is inserted into a slot in the base of the MCP, allowing the frangible element to drop away from the switch, thus activating it and registering an alarm at the CIE. Note: the key should not be left with the MCP after commissioning, but may be left inside the c.i.e. for convenience. Replacement frangible elements are available in packs of 10.



Australia

Tyco Fire Protection Products
Level 3, 95 Coventry Street
Southbank VIC 3006
Tel : 1300 725 688
Tel : +61 3 9313 9700
Email : tfppcustservice.au@tycofp.com

New Zealand

Tyco Fire Protection Products
17 Mary Muller Drive
Hillsborough PO Box 19-545
Woolston Christchurch 8241
Tel : +64 9 635 0760
Email : tsp.sales.nz@tycofire.com