

CP820

Generation 6 *MX* Detection Range Manual Call Point

Features

- Compatible with *MX* Addressable Loop on SIMPLEX 4100ESi, VIGILANT *MX1* and VIGILANT MX4428 panels
- Red LED status indication
- ActivFire listed
- Compact, modern styling
- Test key for fast testing
- Optional plastic cover

The CP820 *MX* Addressable flush mounting Manual Call Point has a plastic coated frangible element to ensure safe and reliable operation, producing no dangerous glass shards. A back box is available for surface mounting.

The CP820 is operated by simply pressing on the centre of the frangible element until it snaps. A hammer, or other impact device, is not required. The snapped frangible element releases a microswitch, which signals an alarm to the VIGILANT *MX* Control and Indicating Equipment (CIE).

The integral red LED indicator will illuminate when an alarm is registered and may be programmed to blink when the CP820 is polled by the CIE.

A transparent hinged cover can be fitted to help provide tamper protection. The cover must be lifted before the MCP can be operated.

The MCP can be tested by inserting the plastic test key into the base of the MCP and pulling down.



Specifications

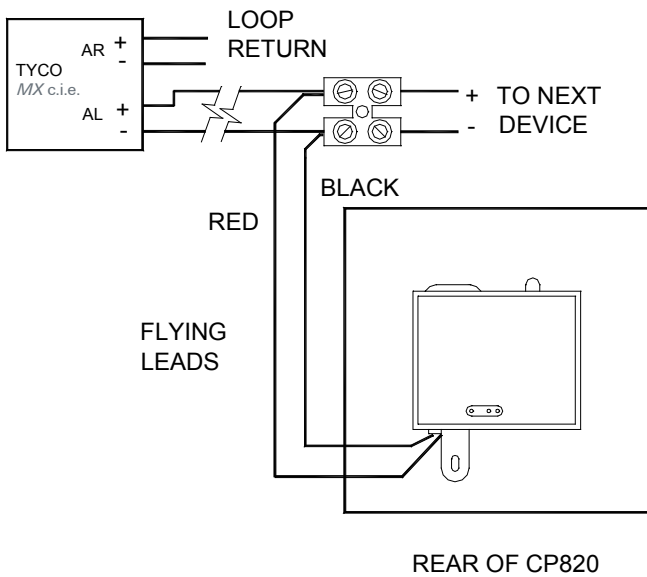
Loop Voltage ¹	20V to 40Vdc
Quiescent Current	275µA
Alarm State Current	2.8mA
Max. MCP820 / Loop ²	200/250
Environment	Indoor Application only
Ambient Temperature	-10°C to +55°C
Storage Temperature	-30°C to +70°C
Relative Humidity	10% to 95% (non cond.)
Ingress Protection	IP24D
Dimensions (HWD)	93 x 89 x 45mm
ActivFire Listing	afp-1503 (AS1603.5-1996)

Part Numbers

CP820	Manual Call Point (no back box)
SU0632	Surface Mounting Back Box
515.001.025	Frangible Glass Element (packet of 5)
515.001.127	Flexible Plastic Element
SC070	Test Key (packet of 10)
SU0615	Transparent Hinged Cover

1. Addressable loop voltage provided by *MX* CIE.

2. MX4428/*MX1*. Refer to LT0273 (MXP), LT0360 (*MX1*-NZ), LT0441 (*MX1*-Au) for design specifications.



Front View
with the front cover
and
frangible element
removed



Programming
Port



Rear View

Wiring

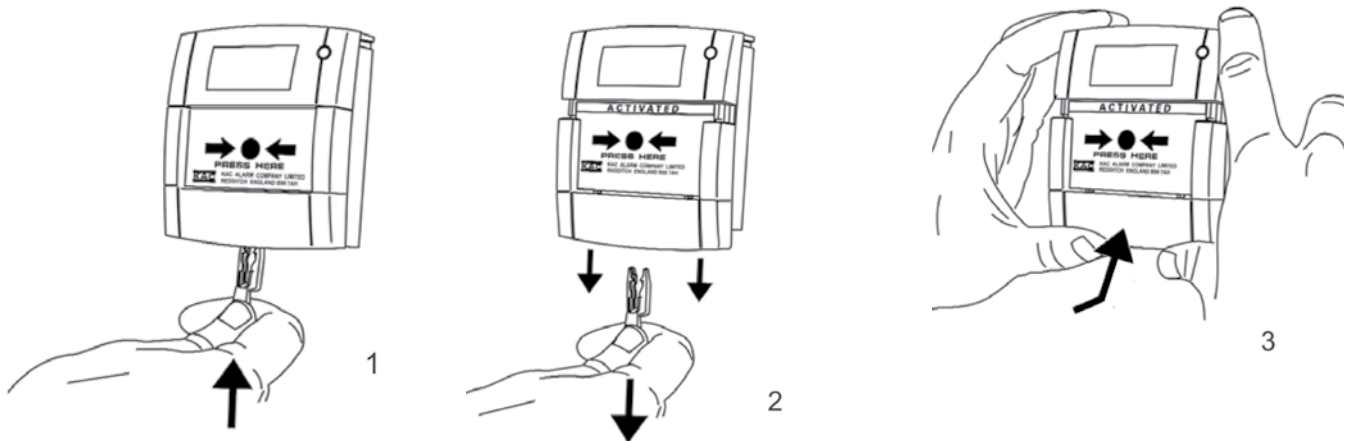
The CP820 is wired as shown. Use WECO 324-HDS or similar terminal block.

Address Setting

The CP820 is shipped with a default (invalid) address of 255 and must be programmed to the correct loop address using the 850EMT or MX Service Tool. The Service Tool is connected to the CP820 at the programming port.

Testing

A test key is provided with each MCP to allow easy testing of its mechanism and wiring without breaking the frangible element. The key is inserted into a slot in the base of the MCP, allowing the frangible element to drop away from the switch, thus activating it and registering an alarm at the CIE. Note: the key should not be left with the MCP after commissioning, but may be left inside the CIE for convenience. Replacement frangible elements are available in packs of 10.



Australia Level 3, 95 Coventry Street Southbank VIC 3006 Tel: 1300 725 688 Tel: +61 3 9313 9700 Email: tfppcustservice.au@tycofp.com
New Zealand 17 Mary Muller Drive Hillsborough PO Box 19-545 Woolston Christchurch 8241 Tel: +64 9 635 0617 Email: tsp.sales.nz@tycoint.com

VIGILANT, a respected regional brand of Johnson Controls, is a technology leader in the Australian and New Zealand fire detection markets with AS and NZS product approvals. The VIGILANT product line includes a comprehensive range of *MX TECHNOLOGY* fire detection products and the market-leading QE90 voice evacuation systems. VIGILANT product is widely supported throughout Australia and New Zealand by a network of installation companies, service companies and distributors.

© 2017 Johnson Controls. All rights reserved. All specifications and other information shown were current as of document revision date and are subject to change without notice.

CP820datVIG1710 October 2017

www.vigilant-fire.com.au