

CP830

Generation 6 *MX*
Detection Range
IP67 Manual Call Point

Features

- // Compatible with *MX* Addressable Loop on SIMPLEX 4100ESi, VIGILANT *MX1* and VIGILANT MX4428 panels
- // *MX* Addressable Manual Call Point
- // IP67 Ingress Protection
- // Red LED Status Indication
- // EN54-11 Certification
- // Compact, Modern Styling
- // Test Key for Fast Testing
- // Optional Plastic Cover

Description

The CP830 *MX* Addressable weatherproof surface-mounting Manual Call Point has a plastic coated frangible element to ensure safe and reliable operation, producing no dangerous glass shards. It is operated by simply pressing on the centre of the frangible element until it snaps, releasing a microswitch, which signals an alarm at the Tyco *MX* Control and Indicating Equipment (CIE). The integral red LED indicator will illuminate when an alarm is registered and may be programmed to blink when the CP830 is polled by the CIE. The CP830 has an International Protection rating of IP67, making it suitable for outdoor applications. The CP830 does not have a formal UV exposure rating. Installation in full sun should be avoided. A transparent hinged cover can be fitted to help provide tamper protection. The cover must be lifted before the MCP can be operated.

Mounting

Mount the back box to a suitably flat surface in the required location, using the three fixing holes and screws provided in the installation kit. Ensure the cable entry holes are in the vertical plane. The back box can be mounted with either the single or double entry holes at the top.

Fit the appropriate cable glands into the 20mm diameter threaded holes as required. Use only the supplied spare washers to fit the respective cable glands or hole stoppers.

The 2 hole stoppers with plastic washers are provided for use where cable glands are not required. Ensure all cable entry holes are securely sealed with the recommended sealant, Loctite 5331. Ensure that the gasket is correctly



Specifications

<i>MX</i> Loop Voltage ¹	20V to 40Vdc
Quiescent Current	275µA
Alarm State Current	2.8mA
Max. CP830 / Loop ²	200/250
Ambient Temperature	-25°C to +70°C
Storage Temperature	-40°C to +80°C
Relative Humidity	10% to 95% (non cond.)
Ingress Protection ³	IP67
Dimensions (HWD)	93 x 98 x 73mm
ActivFire Listed	afp-2798 (EN 54-11:2001)

Part Numbers

514.800.604.Y	Manual Call Point
515.001.025	Frangible Glass Element (packet of 5)
515.001.127	Flexible Plastic Element
SC070	Test Key (packet of 10)
SU0615	Transparent Hinged Cover

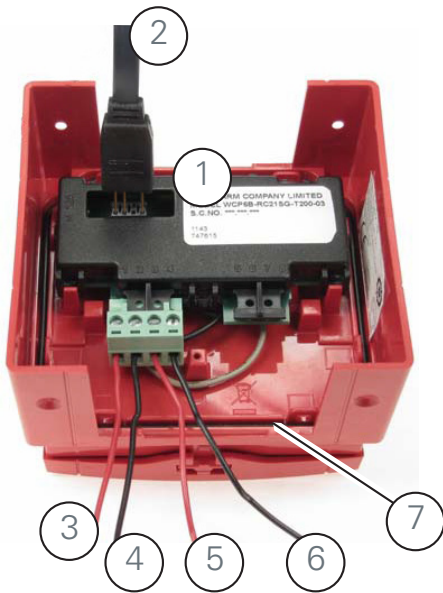
1. Addressable loop voltage provided by *MX* CIE.

2. MX4428/*MX1*; 4100ESi CIE. Refer to appropriate CIE design manuals for specifications.

3. Note the CP830 does not have a formal UV exposure rating. Installation in full sun should be avoided.

seated in its channel on the rear of the cover. Place the call point squarely over the backbox and carefully push the call point until the locating clips have engaged. Use the four fixing screws to lock the call point into place. An Earth continuity terminal is in the rear of the back box; designed to accommodate 2 conductors of up to 2.5mm sq. An earthing plate is provided for continuity of metal conduits.

CP830 Wiring Details - Rear View



- 1 Ancillary programming port
- 2 Ancillary programming lead
- 3 Connected to Loop + IN
- 4 Connected to Loop - IN
- 5 Connected to Loop + OUT
- 6 Connected to Loop - OUT
- 7 Gasket

Cover Removal



Remove the four fixing screws used to lock the call point to the back box.

Place the edge of a large flat bladed screwdriver into the slot between the call point cover and the back box (item 8 at right).

Gently twist until the latches are disengaged.

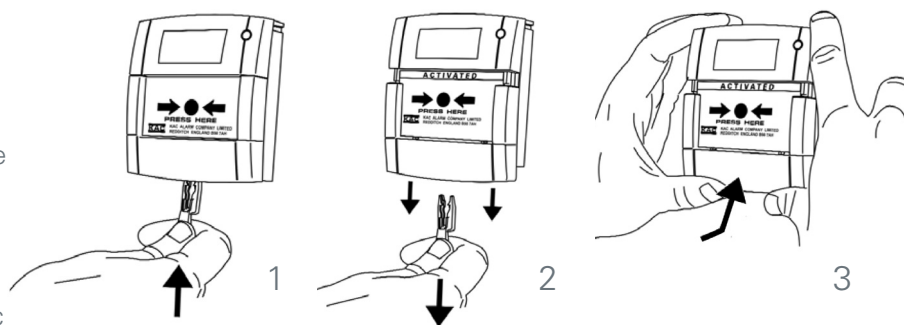
Pull the cover away from the back box.

Address Setting

The CP830 is shipped with a default (invalid) address of 255 and must be set to the correct loop address using an *MX* address programming tool and lead. Ensure that the pins of the ancillary programming lead are inserted completely into the lower row of the programming port for effective communication with the address programming tool.

Testing

A test key is provided with each MCP allowing easy testing, without breaking the frangible element. The key is inserted into a slot in the base of the MCP, allowing the frangible element to drop away from the switch; activating it and registering an alarm at the CIE. Replacement frangible elements in glass or plastic are available.



Australia

Tyco Fire Protection Products
 Level 3, 95 Coventry Street
 Southbank VIC 3006
 Tel : 1300 725 688
 Tel : +61 3 9313 9700
 Email : tfppcustservice.au@tycofp.com

New Zealand

Tyco Fire Protection Products
 17 Mary Muller Drive
 Hillsborough PO Box 19-545
 Woolston Christchurch 8241
 Tel : +64 9 635 0760
 Email : tsp.sales.nz@tycoint.com

Copyright © 2016 Tyco Australia Group Pty Limited. All rights reserved. Tyco reserves the right to make changes to any aspect of this publication at any time without notice. VIGILANT is a trademark of Tyco New Zealand Limited or its affiliates; *MX* TECHNOLOGY is a trademark of Thorn Security Limited or its affiliates; SIMPLEX is a trademark of ADT Services GmbH or its affiliates; VESDA is a trademark of Xtralis Technologies Ltd; TYCO is a trademark of Tyco International Services GmbH.