
Introduction

The MCP830 Addressable surface mounting Manual Call Point has an International Protection rating of IP67, making it suitable for outdoor applications.

It is designed to monitor and signal the condition of a switch contact that is operated by breaking a plastic coated frangible glass element (flexible plastic option available). Any change in the status of the switch is immediately communicated to the VIGILANT MX Control and Indicating Equipment (CIE).

The MCP830 has an integral short-circuit isolator for monitoring the addressable loop wiring. The integral LED indicator is normally off.

When the frangible element is broken, an alarm is registered and the LED will illuminate red.

If a section of the loop wiring adjacent to the MCP830 is shorted, the built-in short-circuit isolator trips, isolating the shorted section and the LED is illuminated yellow.

The status remains until the short is removed.

Figure 1: MCP830



Features

- Compatible with *MX* Addressable Loop on VIGILANT *MX1* and VIGILANT *MX4428* panels
- Integral short circuit isolator
- Red LED status indication
- AS ISO 7240-11 and AS ISO 7240-17 certification
- Compact, modern styling
- Test key for fast testing

Specifications

Table 1: Specifications

Item	Description
Loop voltage	20 V to 40 VDC Addressable loop voltage is provided by <i>MX</i> CIE.
Quiescent current	280 μ A
Alarm state current	2.8 mA
Max MCP830/loop	200/250 <i>MX4428/MX1</i> . For design specifications, refer to LT0273 (<i>MX</i> P), LT0360 (<i>MX1</i> -NZ), and LT0441 (<i>MX1</i> -Au).
Environment	Outdoor application
Ambient temperature	-25°C to +70°C
Storage temperature	-30°C to +70°C
Relative humidity	10% to 95% non condensing
Ingress protection	IP67
Dimensions	93 mm x 98 mm x 73 mm (H x W x D)
ActivFire Listing	afp-2875 (AS ISO 7240-11:2018 and AS ISO 7240-17:2021)

- ⓘ **Note:** The MCP830 does not have a formal UV exposure rating. Installation in full sun should be avoided.

Order information

Table 2: Order information

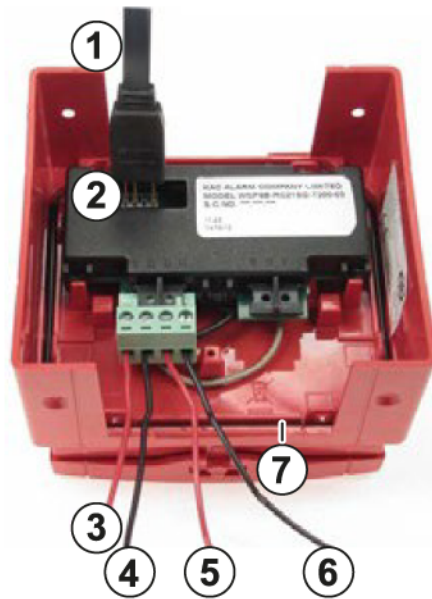
Product	SKU
MCP830 Manual Call Point	514.800.612
5 x Frangible Glass Element	515.001.025
Flexible Plastic Element	515.001.127
10 x Test Key	SC070
Transparent Hinged Cover	SU0615

Wiring

The MCP830 has a factory set (invalid) address of 255. The MCP830 is field programmed with the address prior to installation using an *MX* address programming tool. The associated ancillary programming lead plugs into the programming port.

Ensure that the pins of the ancillary programming lead are inserted completely into the lower row of the programming port for effective communication with the address programming tool.

Figure 2: MCP830 wiring details



Callout	Component
1	Ancillary programming lead
2	Ancillary programming port
3	Connected to loop + IN
4	Connected to loop - IN
5	Connected to loop + OUT
6	Connected to loop - OUT
7	Gasket

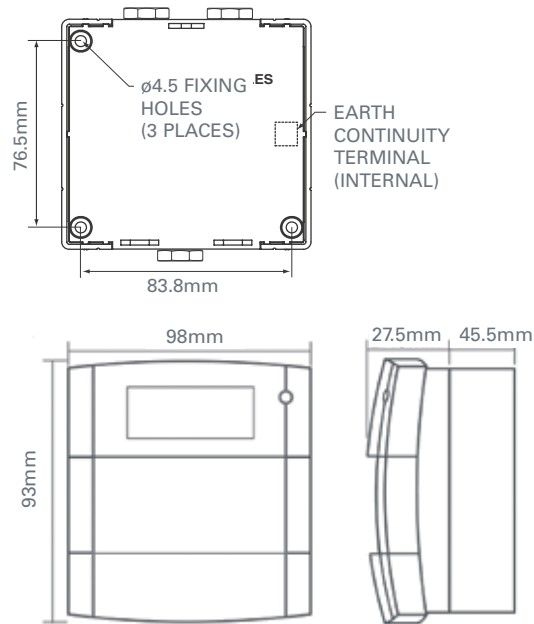
Installation

Ensure the cable entry holes are in the vertical plane, with either the single or double entry holes at the top. Mount the MCP830 back box to a suitably flat surface in the required location using the three fixing holes and screws provided.

Two hole stoppers with plastic washers are provided for use where cable glands are not required. Ensure that all cable entry holes are securely sealed. The recommended sealant is Loctite 5331. Ensure that the gasket is correctly seated in its channel on the rear of the cover.

An Earth Continuity Terminal is situated in the rear of the back box. An earthing plate is provided for continuity of metal conduits. The body of the MCP is fixed to the back box with four fixing screws supplied.

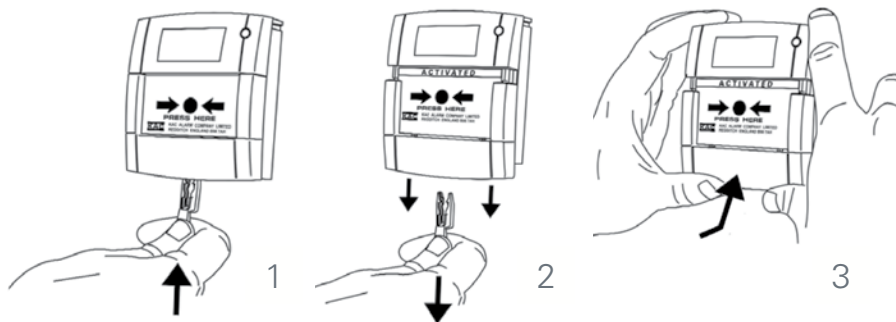
Figure 3: Installing the MCP830



Testing

A test key is provided with each MCP allowing easy testing, without breaking the frangible element. The key is inserted into a slot in the base of the MCP, allowing the frangible element to drop away from the switch; activating it and registering an alarm at the CIE.

Figure 4: Testing the MCP830



Contact information

Australia

Level 3, 37 Dalmore Drive, Scoresby, Vic, 3179

Tel: 1300 725 688

Email: fdp.customerservice.anz@jci.com

New Zealand

10 Mary Muller Drive, Hillsborough, Christchurch, NZ, 8022

Tel: +64 9 635 0617

Email: fdp.customerservice.anz@jci.com

