

INSIDE VIEW OF CABINET

ASSEMBLY PROCEDURE:

AFTER DRILLING THE HOLE PATTERN IN THE CABINET AND DOOR AS DETAILED ON SHEET 2 OF THIS DRAWING, ASSEMBLE THE PSU AS PER STEPS DETAILED BELOW.

1. PRESS 4 OR 6 PLASTIC PCB STAND-OFFS INTO THE 6.35mm HOLES DRILLED IN THE BACK OF CABINET. PRESS THE 3/4" PLASTIC GROMMET INTO THE DIAMETER 19mm HOLE DRILLED IN BACK OF THE CABINET, FROM THE BACK OF THE CABINET.
2. STICK THE MAINS TERMINATION LABEL, LB0598, ON THE BACK OF THE CABINET IN THE LOCATION SHOWN USING THE 4mm HOLE TO LOCATE CORRECTLY. MOUNT THE MAINS AND FUSE BLOCK ON THE INSIDE OF THE CABINET WITH THE M3 BARREL NUT AND M3 X 20 SCREW AS SHOWN. INSERT THE FUSE IN THE TERMINAL BLOCK. MOUNT THE P-CLIP IN BACK OF CABINET USING 1 OFF M4 X 10 SCREW, M4 BARREL NUT AND FLAT WASHER AS SHOWN.
3. IF REMOTE MOUNTING THE LED DISPLAY BRD, BREAK OFF THIS SECTION OF PCB ASSEMBLY. MOUNT THE MAIN SECTION OF THE PCB ASSEMBLY ON THE CABINET WITH 4 OFF PLASTIC PCB STAND-OFFS.
4. IF REMOTE MOUNTING, MOUNT THE LED DISPLAY SECTION OF THE PCB ASSEMBLY ONTO THE CABINET DOOR WITH 2 OFF ADHESIVE BASED PLASTIC PCB STAND-OFFS. ENSURE THAT THE LEDS LINE UP WITH THE 3 OFF 6.35mm DIAMETER HOLES DRILLED IN THE CABINET DOOR.
5. MOUNT THE TRANSFORMER IN THE CABINET WITH THE 4 OFF M4 X 10 SCREWS AND M4 SHAKEPROOF WASHERS SUPPLIED.
6. CREATE A CABINET EARTH STUD WITH THE M4 X 16 SCREW, SHAKEPROOF WASHER AND M4 NUT SUPPLIED. CONNECT THE PCB EARTH LEAD, MAINS EARTH LEAD AND DOOR EARTH LEAD TO THIS EARTH STUD AND FASTEN IN PLACE WITH AN M4 SHAKEPROOF WASHER AND NUT. FIT THE OTHER END OF DOOR EARTH LEAD TO THE CABINET DOOR. TERMINATE THE MAINS EARTH LEAD IN THE MAINS TERMINAL BLOCK AS SHOWN.
7. TERMINATE THE TRANSFORMER PRIMARY LEADS AND MOV INTO THE MAINS TERMINAL BLOCK. ONE LEAD TO THE FUSED TERMINAL AND OTHER LEAD TO THE CENTRE TERMINAL. ENSURE THAT THE TERMINALS CLAMP ONLY THE CONDUCTORS AND ALL EXPOSED CONDUCTORS ARE WITHIN THE HOUSING.
8. STICK THE DOOR LABEL TO THE FRONT OF THE CABINET DOOR ENSURING THAT THE LABEL TEXT LINES UP WITH DISPLAY LEDS.
9. STICK THE PRODUCT LABEL SUPPLIED TO THE INSIDE OF THE CABINET DOOR AS SHOWN.
10. CONNECT THE LED DISPLAY BOARD LOOM BETWEEN THE LED DISPLAY BOARD AND THE MAIN PCB (J23). CABLE TIE THE LOOM TO THE INSIDE OF THE CABINET AS SHOWN.

CONFIDENTIAL: THIS DOCUMENT MUST NOT BE COPIED NOR THE CONTENTS PASSED ON TO ANY THIRD PARTY WITHOUT THE CONSENT OF THE COMPANY.

UNLESS OTHERWISE STATED: ALL DIMENSIONS IN MILLIMETRES. DO NOT SCALE. TOLERANCES ARE TO BE: 1 DECIMAL PLACE ±0.5, 2 DECIMAL PLACES ±0.3, 3 DECIMAL PLACES ±0.1

3rd ANGLE PROJECTION

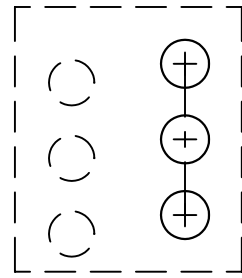
ISS/REV	AMENDMENTS	ECO	DRN	CHKD	AUTH	APVD	DATE
A	ORIGINAL	-	KJS	GEL	LSC	DSCP	4-3-03
B	MOV (ME0501) ADDED TO MAINS TERMINAL.	4492	KJS	GEL	LSC	DS	30-5-13

tyco
Fire Protection Products
 TYCO FIRE PROTECTION PRODUCTS
 17 MARY MULLER DRIVE
 P.O. BOX 19545
 CHRISTCHURCH, PH: +64 3 3895096
 NEW ZEALAND. FAX: +64 3 3895938

**1948 POWER SUPPLY, 2A, 24V
 CABINET LAYOUT
 MECHANICAL ASSEMBLY**

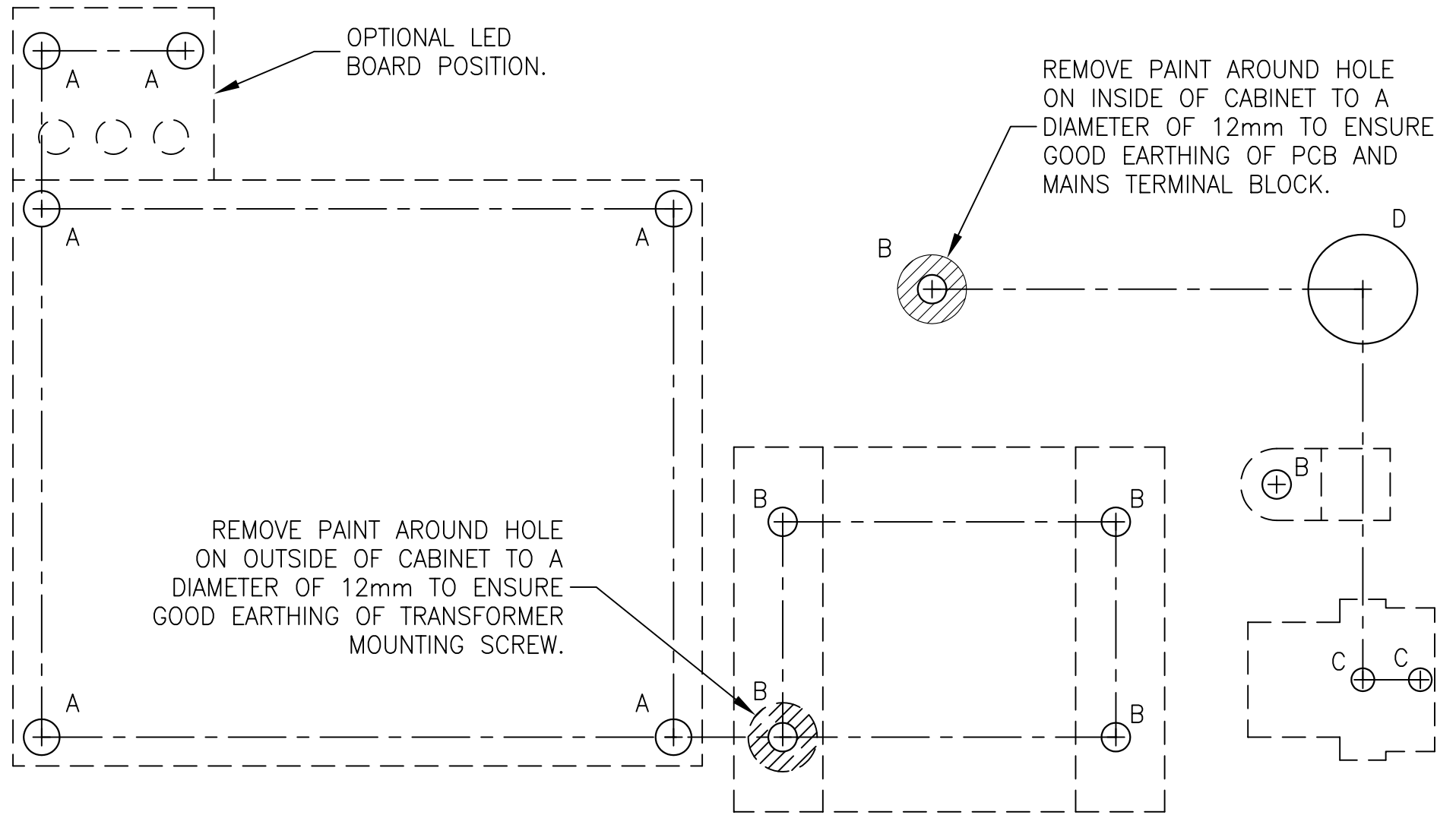
DRAWING No: **1948-34** SHEET **1** of **2**

A3	ISS/REV B	PART No: LT0340
-----------	------------------	------------------------



HOLE SIZES.
ALL HOLES $\phi 6.350$, 3 PLACES.

DOOR DRILLING TEMPLATE
SCALE 1:1



CABINET DRILLING TEMPLATE
SCALE 1:1

HOLE SIZES.
A = $\phi 6.350$, 6 PLACES.
B = $\phi 5.000$, 6 PLACES.
C = $\phi 4.000$, 2 PLACES.
D = $\phi 19.0$, 1 PLACE.

CONFIDENTIAL: THIS DOCUMENT MUST NOT BE COPIED NOR THE CONTENTS PASSED ON TO ANY THIRD PARTY WITHOUT THE CONSENT OF THE COMPANY.

UNLESS OTHERWISE STATED: ALL DIMENSIONS IN MILLIMETRES. DO NOT SCALE. TOLERANCES ARE TO BE: 1 DECIMAL PLACE ± 0.5 , 2 DECIMAL PLACES ± 0.3 , 3 DECIMAL PLACES ± 0.1

3rd ANGLE PROJECTION

ISS/REV	AMENDMENTS	ECO	DRN	CHKD	AUTH	APVD	DATE
A	ORIGINAL	-	KJS	GEL	LSC	DSCP	4-3-03

tyco / **Safety Products**

TYCO SAFETY PRODUCTS
211 MACES RD PH: +64 3 3895096
P.O. BOX 19545 FAX: +64 3 3895938
CHRISTCHURCH, NEW ZEALAND

1948 POWER SUPPLY, 2A, 24V
CABINET AND DOOR
DRILLING TEMPLATE

DRAWING No: 1948-34 SHEET 2 of 2

A3 | ISS/REV A | PART No: LT0340