



## FP2020 QE20 Battery Shelf Installation Instructions

### 1. General Description

This sheet describes installation of the FP2020 QE20 Battery Shelf. The shelf is a grey metal plate that can be mounted in a QE20 40U deep cabinet to provide a shelf for mounting a second battery or set of batteries. It is required in “combo” panels, where both a fire panel and the QE20 are mounted in the same 40U cabinet. The shelf supports the fire panel batteries, whilst the QE20 batteries are mounted underneath.

The battery shelf can support:

- Up to 3 x 75Ahr batteries for the 4100ESi in a Simplex / QE20 Combo panel, with another 3 x 75Ahr batteries under the shelf for the QE20.
- Up to 2 x 40Ahr batteries for the MX1 in a MX1 / QE20 Combo panel, with 2 x 75Ahr batteries under the shelf for the QE20.
- 1 x 100Ahr battery when the shelf is used to fit 2 x 100Ahr batteries in a QE20 panel.

The shelf does not fit into the 28U or shallow depth QE20 cabinets.

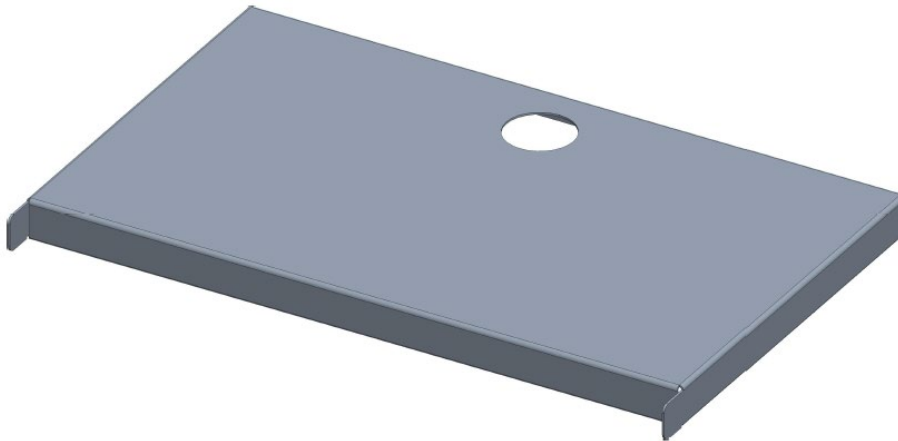


Figure 1 – QE20 Battery Shelf

### 2. Kit Contents

Each FP2020 kit contains:

- 1 x ME0630 QE20 Battery Shelf.
- 1 x LT0716, these installation instructions.

### 3. Mounting the Battery Shelf

The Battery Shelf is mounted in the 40U deep cabinet, as shown in Figures 2 to 4. It does not fit into shallow depth or 28U cabinets.

Firstly, fit the bottom battery or set of batteries in the bottom of the cabinet. Attach the battery linking loom (LM0653) between the two batteries (to wire them in series to make 24V). Connect the QE20 battery lead LM0652 Red wire to the +ve battery terminal and the black wire to the –ve battery terminal. Protect the terminals of the batteries so that if anything metallic touches them it does not short out the battery terminals.

Orientate the shelf vertically with the 51mm hole to the top and front as shown in Figure 2 and lift into the cabinet.

Once the shelf is inside the cabinet angle the shelf down and pull out the bottom to position the two tabs at the front edge of the shelf to slide into the two matching slots in the 19” rack flanges as shown in Figure 3.

Run the lead for the bottom batteries up through the hole in the shelf.

Lower the back of the shelf down into place, pushing it to the back of the cabinet so that the tabs at the rear of the shelf fit into matching louvers in the rear wall of the cabinet as shown in Figure 4.

Fit the top battery or set of batteries and connect the batteries to the fire panel and QE20 as required.

Use the reverse procedure to remove the batteries.

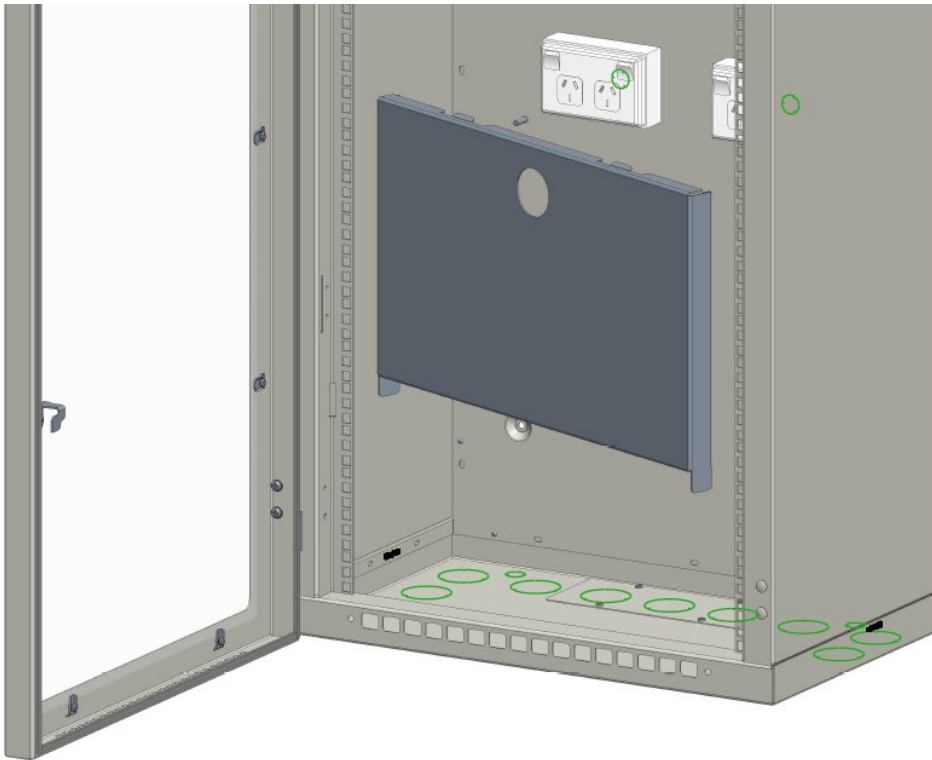
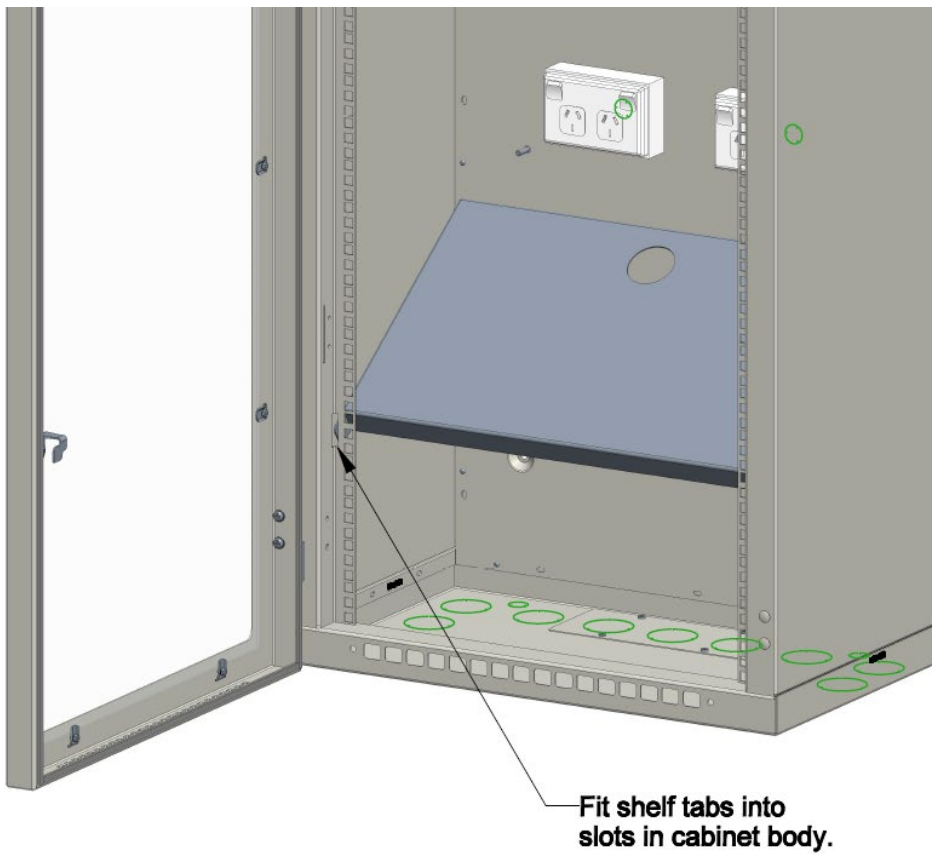


Figure 2 –Lift Battery Shelf into QE20 Cabinet



**Fit shelf tabs into slots in cabinet body.**

Figure 3 –Angle Tabs into Slots in the QE20 Cabinet



Figure 4 –Lower Battery Shelf into place in QE20 Cabinet

#### 4. Internal Wiring

When installed, there is a 51mm diameter hole at the back of the shelf that allows the battery lead to the lower battery / set of batteries to be run through.

#### 5. Specifications

Fitting	Fits into premade slots and louvers in the QE20 40U deep cabinet.
Material	1.6mm Zintec Powder-coated PR12/816C Grey Gloss
Battery Capacity	Up to 3 x 75Ahr or 1 x 100Ahr on the shelf.