
SECTION A - PRODUCT APPLICATION

1. INTRODUCTION

The S131 is an infra-red flame detector designed to provide early warning of flaming fires involving carbonaceous materials. The detector makes use of “state of the art” infra-red sensors and filters to provide major improvements in the rejection of deceptive phenomena while retaining the inherent advantages of infra-red detectors.

Special attention has been paid to the optimisation of the optical bandwidth. The detector uses optical filters which are made to THORN Security Limited's specification to restrict the response to a narrow band in the region of 4.4µm. The bandwidth chosen gives high sensitivity to hydrocarbon diffusion flames while minimising the response to other sources of infra-red radiation. In particular the response to sunlight has been reduced to a level at which the detector can be considered completely “solar-blind”.

The principles on which the detector is designed, are protected by the following patents:

US Patent No. 4471221

Canadian Patent No. 1191229

European Patent Application No. 64811

Japanese Patent Application No. 62667/82

The use of micropower electronic circuits allows the detector to operate on a conventional 2-wire fire detection circuit, and to achieve intrinsic safety apparatus certification.

2. GENERAL CONSTRUCTION

The detector is of robust construction to allow its use in harsh environments.

The infra-red sensor and other circuit components are mounted on a single printed circuit board within a stainless steel screening box. The box is filled with epoxy resin to form a rugged opto-electronic assembly.

The encapsulated assembly is in turn contained within an impact-resistant glass reinforced moulded plastic housing designed to give a level of ingress protection to IP67. The moulding mix contains graphite to eliminate the possibility of generating a static charge during cleaning with a dry cloth.

Two 20mm cable entries are provided at the bottom end of the housing and all electrical connections are made to two 4-way terminal blocks inside the housing.

The complete detector may be mounted on an optional stainless steel bracket which allows a wide range of adjustment in two axes.

3. APPLICATION

3.1 GENERAL

The detector is intended for the protection of high risk areas in which accidental fires are likely to result in flaming combustion with the production of carbon dioxide. Typical materials in this type of risk are:

- a) Flammable liquids, including petroleum products, alcohol and glycol etc.
- b) flammable gases including methane.
- c) Paper, wood and packing materials.
- d) Coal.
- e) Plastics.

These substances ignite readily and burn rapidly, producing flame, often accompanied by large volumes of dark smoke.

The detector is programmed to respond to diffusion flames with a flicker frequency between 0.5 - 15Hz and to ignore premixed flames, e.g. a blue flame bunsen burner or a welding torch in the cutting mode, these flames do not have a flicker frequency.

The detectors are not designed to respond to flames emanating from fuels which do not contain carbon e.g. hydrogen, ammonia, metals, and should not be used for such risks without satisfactory fire testing.

The S131, by virtue of its construction and rejection of spurious radiation, is suitable for use both indoors or outdoors in a wide range of applications, especially the demanding environments of the offshore oil and gas industries.

3.2 USE IN HAZARDOUS ATMOSPHERES

The detector is certified intrinsically safe, meeting the requirements of EN50 020 Part 7. It is classified (EEx ia IIC T5) and, as part of an intrinsically safe system, is suitable for use in hazardous zones 0, 1 and 2 where group IIC gases and vapours are present in explosive concentrations and the auto ignition temperature exceeds 100°C.

4. BENEFITS OF THE S131

Infra-red flame detectors offer major benefits over detectors working in the visible or ultra-violet regions of the spectrum.

For example they are:

- a) highly sensitive to flame thus increasing probability of early detection of hydrocarbon fires.
- b) not greatly affected by window contamination by dirt and oil deposits thus decreasing maintenance frequency leading to operating cost reduction.
- c) able to see flames through smoke and able to see flames through high densities of solvent vapours thus increasing the probability of early detection of hydrocarbon fires over other ultra-violet detectors in the same situations.

The S131 has all the above benefits and additionally it is:

- d) Completely “solar-blind” in normal conditions thus eliminating false alarms due to direct or indirect sunlight.
- e) insensitive to electric arcs thus eliminating false alarms from welding operations.
- f) insensitive to artificial light sources.
- g) intrinsically safe, and can be installed as part of a certified intrinsically safe system.
- h) sealed to IP67 (when suitable cable glands are used) ensuring long term reliability in harsh environments under sustained conditions of driving wind and rain.

5. ORDERING INFORMATION

The S131 is supplied without a fitted bracket as in some applications detectors are bolted directly onto a bulkhead.

A separate stainless steel 316 bracket is available for other applications.

Stock Code Number:

S131 Detector	516-009-023
Stainless Steel Bracket	517-001-184

SECTION B - SYSTEM DESIGN INFORMATION

1. INTRODUCTION

The design of a system incorporating S131 flame detectors must take account of the detector's electrical, mechanical and environmental characteristics, and its detection performance. This information is given below together with guidance on detector siting.

2. ELECTRICAL CHARACTERISTICS

2.1 GENERAL

The S131 is a two-wire device which is designed to operate on any fire detection control equipment currently manufactured by THORN Security Limited. The quiescent current drain is very small and the alarm condition is signalled by a large increase in current demand. Resetting is achieved by removing the supply voltage for a period of at least one second.

2.2 TECHNICAL DATA

Supply Voltage: +15.5V to +25.5V d.c. (polarity conscious)

Note: The detector performance is not guaranteed below 15.5V and the output stage is inhibited at 15V and below.

Quiescent Current:	100µA max at 20V d.c.
Alarm Output Mode:	2-wire, latching 330 ohm in series with 3V switched across supply.
Alarm Indication:	red LED visible from front of detector.
Reset Time:	not greater than 1 second.
Reset Voltage:	supply must be reduced to less than 2V.
Stabilisation Time:	20 seconds (typical)
Equivalent Inductance:	0mH
Equivalent Capacitance:	4nF

Detectors from serial number 16000 onwards have been modified to facilitate their use with control panels not manufactured by THORN Security Limited, where the reset is short.

The reset facility is implemented as follows:

- For fast reset to operate it is necessary for the supply to be removed for a minimum of 0.5 seconds,
- the supply must fall by greater than 5 Volts,

- the detector [or Zone] must have an end-of-line resistor with a resistance of less than 100k,
- the noise immunity on the line [ripple] is less than 3 Volts peak.

3. MECHANICAL CHARACTERISTICS

3.1 GENERAL

The detector comprises a two-part moulded plastic enclosure as shown in Fig. 1. The rear section of the housing is attached to an optional adjustable mounting bracket or the detector may be fitted directly to a suitable surface.

The front section of the enclosure contains the encapsulated electro-optical assembly which is connected to the terminal blocks by a small cableform. Two sapphire windows are fitted in the front of the housing. The upper window allows infra-red radiation to fall on the sensor and the LED alarm indicator is visible through the lower window.

The front section of the enclosure is attached to the rear section by four captive screws. A seal provided between the front and rear sections ensures protection to IP67.

3.2 TECHNICAL DATA

Dimensions:	160mm x 160mm x 90mm without bracket (see Fig. 1).
Weight:	1.9kg (with cable assembly and optional bracket)
Enclosure:	Glass reinforced polyester with an anti-static graphite content. Interior & exterior metal fittings of stainless steel.
Mounting Bracket:	Bright Stainless steel to BS1449 Pt 2 316S161 (see Fig. 1).

4. ENVIRONMENTAL

4.1 GENERAL

The design and construction of the S131 is such that it may safely be used over a wide range of environmental conditions.

Relevant limits are given on page 5.

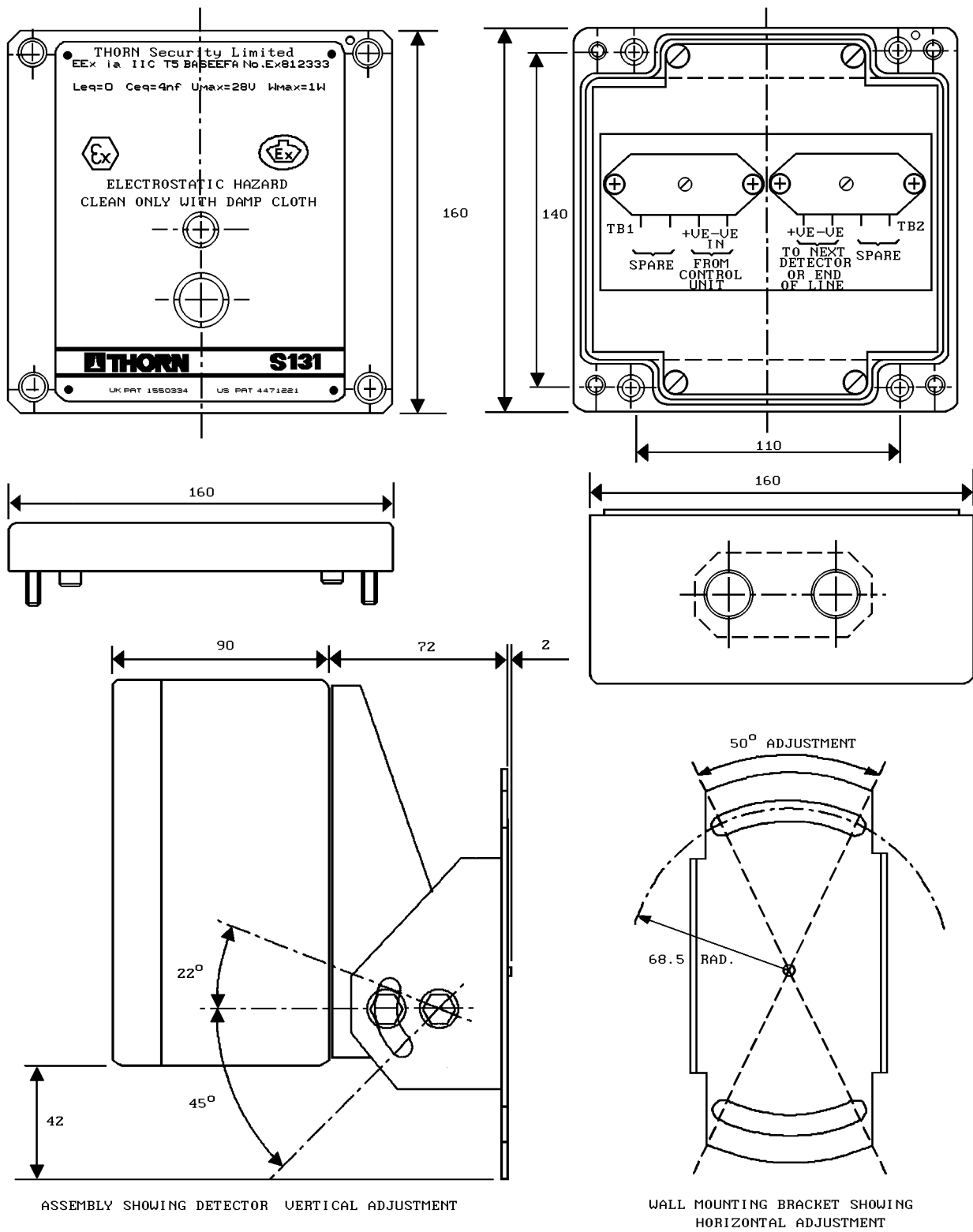


Fig. 1 The S131 Detector and Mounting Bracket

4.2 TECHNICAL DATA

4.2.1 TEMPERATURE AND HUMIDITY

Operating temperature range:

-30°C to +70°C (-40°C with reduced range)

Storage temperature range:

-40°C to +80°C

Relative humidity:

95% (100% intermittent)

Enclosure Protection:

IP67 - IEC529, BS5490

4.2.2 VIBRATION

The S131 is designed to operate within specification and without false operation when subjected to vibration on any axis at the following levels:

2 - 24Hz	±1.27mm
24 - 55Hz	2.50g
55 - 100Hz	0.7g

When the detector is correctly mounted using the bracket supplied there are no significant resonances in the frequency range 2-100Hz.

4.2.3 RADIO FREQUENCY INTERFERENCE

The detector is insensitive to radio frequency interference and will operate normally in field strengths of 10V/m at frequencies up to 1000MHz. It thus meets or exceeds the requirements of BS6667: Part 3 1985 (IEC 801-3: 1984) severity level 3 (severe electromagnetic environments).

4.2.4 IONISING RADIATION

The S131, like other infra-red detectors, is insensitive to X-rays and gamma radiation as used in non-destructive testing.

The detector will operate normally and will not false alarm when exposed to this type of radiation although long term exposure to high radiation levels will ultimately lead to permanent damage.

5. PERFORMANCE

5.1 GENERAL

A large number of fire tests have been carried out to determine the response limits of the S131 detector. The results of these tests are summarised below. In order to appreciate their significance, an understanding of the mode of the operation of the detector is necessary, and a brief explanation follows:

5.1.1 MODE OF OPERATION BEHAVIOUR IN FIRE TESTS

Flaming fires involving carbonaceous materials produce large quantities of carbon dioxide. This part of the combustion process gives rise to a very high level of infra-red radiation in the wavelength region between 4.2µm and 4.7µm. The unique patented filtering system of the S131 Detector restricts the radiation reaching the sensing cell to a narrow band of infra-red radiation in the region of 4.4µm.

The radiation from a fire flickers in a characteristic way and the detector uses this flicker signal to give extra discrimination against interfering infra-red sources including premixed flames and hot surfaces (black body radiation).

The detector circuit analyses the signal within the flicker frequency region and, if the amplitude of the signal is above a preset threshold level for three seconds, then an alarm is signalled. If the signal is below this threshold level then the detector will not alarm even after a long period of time.

The level of the signal depends upon the size of the flame and its distance from the detector. For liquid fuels the level is roughly proportional to the surface area of the burning liquid. For any type of fire the signal level varies inversely with the square of the distance.

For convenience, fire tests are normally carried out using liquid fuels burning in pans of known area in still air.

The sensitivity of a detector can then be conveniently expressed as the distance at which a particular fire size can be detected.

It is important to think in terms of distance rather than time because of the different burning characteristics of different fuels. Fig. 2 shows the response to two different fuels which ultimately produce the same signal level.

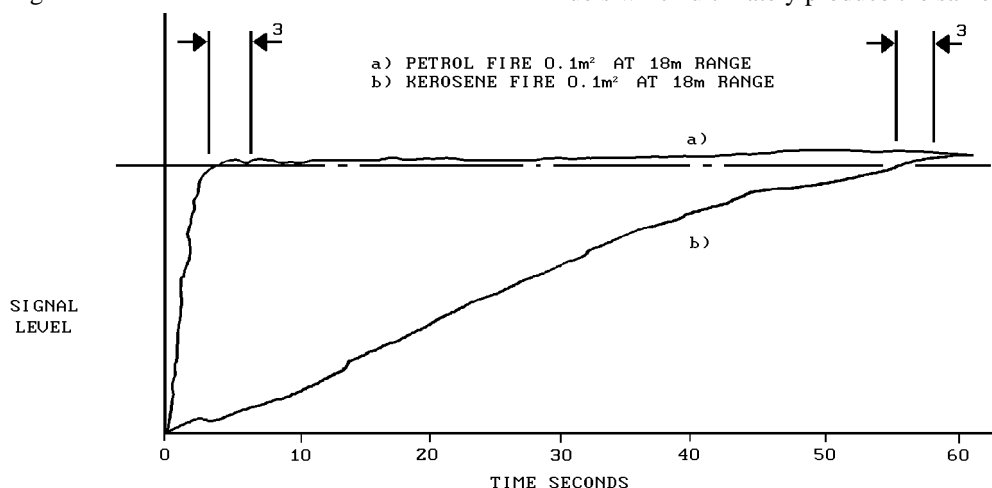


Fig. 2 Response to Fires

The signal level given by petrol quickly reaches its maximum, and produces an alarm within about six seconds of ignition. Kerosene, on the other hand, being less volatile, takes about a minute to reach equilibrium and an alarm is given in about 55 seconds from ignition.

The time taken by the fire to reach equilibrium depends of course on the initial temperature of the fuel. If the kerosene were to be pre-heated to a temperature above its flash point then its behaviour would be equivalent to that of petrol at 25°C.

The test data presented below refers to fires which have reached their equilibrium condition.

5.2 FIRE TEST DATA

5.2.1 PETROL

The most convenient fuel for fire tests is petrol (gasoline) since it is readily available and quickly reaches its equilibrium burning rate.

The graph in Fig. 3 shows the detection range as a function of pan area for petrol fires. It will be seen that this curve is approximately a square law that is to say that to obtain detection at twice the distance the pan area must be multiplied by four.

5.2.2 OTHER LIQUID HYDROCARBONS

Ranges achieved with other fuels burning on 0.1m² pans are as follows:

n-heptane	18m
kerosene	18m
Alcohol (I.M.S.)	15m
Diesel oil	15m
Ethylene glycol	18m

The detection range for other pan areas may be calculated using the square law relationship given in Para. 5.2.1.

5.2.3 GAS FLAMES

Most flammable gases contain carbon, and the radiation produced when such gases burn is easily detected by the S131. Additionally, tests have shown that "accidental" fires involving gases will produce sufficient flicker to give

rapid alarm response from the detectors. This is equally true for fires resulting from low pressure (less than 0.5 lb/in² (0.035 kg/cm²)) leaks.

Typical results obtained by burning natural gas (methane) from a 1 inch (24.4mm) diameter pipe are given below:

GAS PRESSURE		DETECTION RANGE
(lb/in ²)	(kg/cm ²)	(metres)
0.5	0.035	30
1.0	0.070	30
5.0	0.351	50
25.0	1.75	60

5.3 VOLTAGE DEPENDENCE

The sensitivity of the detector is constant over the voltage range +15.5V to +25.5V DC. The performance outside this range is not guaranteed.

Note: The detector alarm circuit is inhibited for supply voltages of 15V or less.

5.4 TEMPERATURE DEPENDENCE

The range of the detector will vary by less than ±10% over the range of -20°C to +80°C.

5.5 DIRECTIONAL SENSITIVITY

The sensitivity of the S131 is at a maximum on the detector axis. The variation of range with angle of incidence is shown in Fig. 4.

6. DESIGN OF SYSTEM

6.1 GENERAL

Using the information given in Para. 2 to 5 it is possible to design a flame detection system having a predictable performance. Guidance on the application of the above data and on siting of detectors is given below.

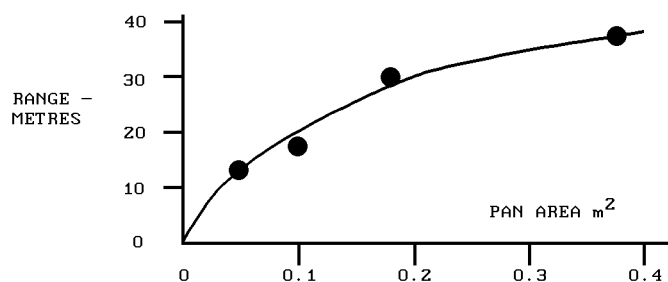


Fig. 3 Detection Range vs Pan Area - Petrol

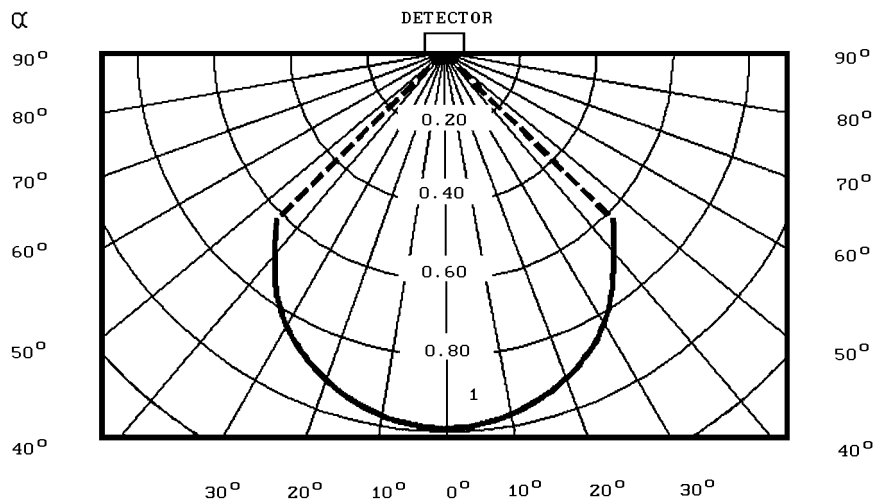


Fig. 4 Relative Range vs Angle of Incidence

6.2 USE OF FIRE TEST DATA

It has been explained in Para. 5 that the sensitivity of the detector is most easily specified in terms of its response to well-defined test fires. Tests are conveniently carried out using a 0.1m² pan. Sensitivity to other pan areas is calculated from the square law relationship.

Accidental fires by their very nature rarely of a well-defined size. It is still possible however to judge the response to a “real” fire using the fire test data.

For example. A spillage fire involving a highly volatile liquid such as petrol will spread very quickly from the point of ignition to cover the complete surface of the pool. Such a spillage would normally cover 2m² or so. Using the data for petrol fires and extrapolating to an area of 2m² we would expect the S131 to respond within 10 seconds at a distance of about 80 metres. At a distance of 10 metres the response time would only be a few seconds less and in any event can never be less than 3 seconds.

If on the other hand the spillage involved a less volatile material such as kerosene, the spread of flame from the ignition point would be much slower. The detector would then respond in a time dependent on the distance from the fire. At 18 metres, for example, an alarm would be given when the fire had reached 0.1m² and at 36 metres, when the fire had grown to 0.4m².

6.3 DETERMINING NUMBER OF DETECTORS

It will be clear that the number of detectors required for a particular risk will depend on the area involved and the fire size at which detection is required. Large areas or small fires require large numbers of detectors.

There are as yet no agreed “rules” for the application of flame detectors and the overall system sensitivity must therefore be agreed between the installer and the end user. Once this agreement has been reached the system designer can determine the area covered by each detector using a scaled plot based on Fig. 4 and the fire test data. This plot is best drawn to the same scale as the site plan so that direct imposition can be used to determine detector coverage.

In carrying out the design, certain factors should be kept in mind:

- For area rather than spot protection, the best coverage will normally be obtained mounting the detectors on the perimeter of the area and pointing into the area.
- Any object within the detector's field of view will cause a “shadow” in the protected area. Even small objects close to the detector can cause large shadows.
- The detectors are passive devices and will not react with one another. They may therefore be positioned with their fields of view overlapping.

7. APPROVALS AND COMPLIANCE WITH STANDARDS

7.1 INTRINSIC SAFETY

The S131 complies with the harmonised European Standards:

BS5501: Part 1: 1977 EN50014

BS5501: Part 7: 1977 EN50020

The detector has been certified by BASEEFA under certificate number Ex 812333 and the detector is classified: EEx ia IIC T5.

7.2 OTHER STANDARDS

The S131 is a development from the S111 offering a more robust housing. The S111 has been submitted to independent tests which show that it meets all the requirements of the “C.E.A. Test Methods for Point Infra-red Flame Detectors” up to its designed angle of vision of 90°.

7.3 OTHER APPROVALS

The complete list of approvals for ALL equipment is given in publication 05A-01-G1 which is updated at regular intervals.

SECTION C - INSTALLATION

1. GENERAL

The S131 detector is supplied with the option of an adjustable mounting brackets for fixing to a convenient rigid surface. All electrical connections are made via the two 4-way terminal blocks inside the detector housing. Two 20mm cable entries are provided. Guidance on mounting and wiring the detectors is given below.

2. MOUNTING A DETECTOR

The location of each detector should have been determined at the system design stage according to the principles detailed marked on the site plan.

The actual mounting position must, however, be decided during installation, and in choosing the position the principles following together with the original system requirements should be followed.

2.1 CHOICE OF MOUNTING POSITION

The following points must be observed when choosing the mounting position.

- The detector must be positioned such that a clear line of sight is provided to all parts of the risk area. Roof trusses, pipework, supporting columns etc. in front of the detector can cause significant shadowing and should be avoided,
- if supervision of an area immediately below the detector is required it is essential that the angle between the detector and the horizontal is not less than 40° ,
- the detector should not be sited in a position where it will be continually subjected to water drenching,

- in outdoor installations in areas of high solar radiation, some form of sunshade is recommended to prevent excess heating of the detector,
- the detector should not be sited in a position in which it will be subject to severe icing,
- the detector must be mounted on a stable structure which is readily and safely accessible for maintenance staff.

The detector mounting bracket is to be secured with two M8 bolts, studs or screws at the fixing centres shown in Fig. 1. A drilling template is provided to allow the optimum selection of the fixing centres and the 2.5mm diameter, 3mm deep pivot hole.

Alternatively the detector may be secured directly to the fixing surface with four M8 bolts, studs or screws at the fixing centres shown in Fig. 1.

The surface chosen for the mounting should be flat over the area of the bracket or detector to ensure a stable fixing.

The S131 may be operated in any position but the mounting point must obviously be chosen to allow sufficient clearance for adjustment of the angle and must also allow space for the cable assembly. A clearance of 200mm, in all directions from the fixing point will normally be sufficient to allow the full range of adjustment. Fig. 2 refers.

The detector mounting bracket is to be secured with two M8 bolts, studs or screws at the fixing centres shown in Fig. 1. A drilling template is provided to allow the optimum selection of the fixing centres and the 2.5mm diameter, 3mm deep pivot hole.

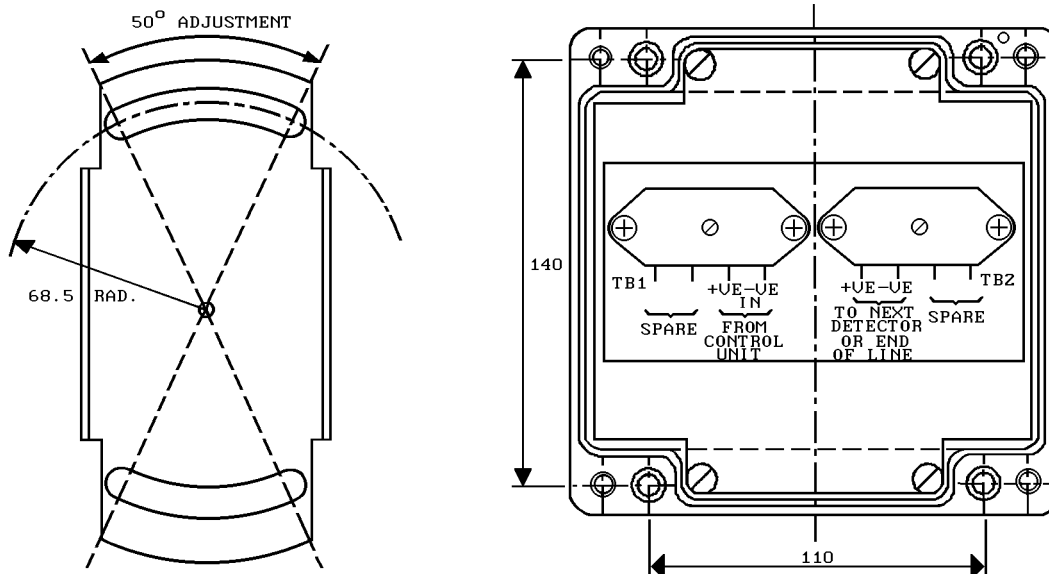


Fig. 1 Fixing Dimensions

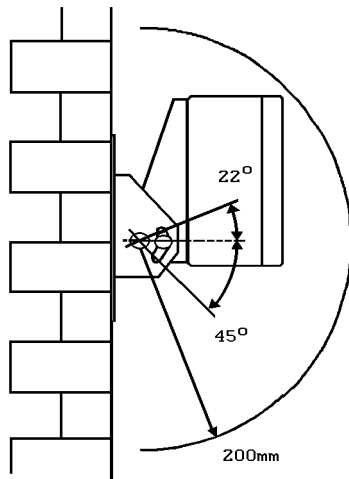


Fig. 2 Clearance Required for Full Adjustment

3. DETECTOR WIRING

Detectors will normally be connected in zones which may contain up to ten detectors. All detectors on a zone are connected in parallel and some form of end-of-line device should be used to monitor line continuity.

The wiring between the detectors and control equipment must provide the required degree of mechanical protection but allow the detector alignment to be adjusted to suit the area to be protected.

The detector is fitted with two 4-way terminal blocks giving separate terminal blocks for incoming and outgoing lines. The two 20mm cable entries provided permit convenient connection of the incoming and outgoing lines using metal flameproof cable glands with continuity of cable screens provided by the cable gland plate.

To ensure no moisture ingress to the detector during the time between Installation and Commissioning tighten the four hexagonal socket cover retaining screws to torque of 3.5-4.5N.m (2.6 - 3.3lbf.ft).

3.1 CONVENTIONAL CIRCUITS (SAFE AREAS)

Wiring for conventional circuits is as shown in Fig. 3.

In order to minimise the risk of radio frequency interference it is recommended that some form of screened wiring be used. The screen may take the form of steel conduit or metal sheathing of the cable.

The S131 infra-red flame detector is compatible with the DM520 Conventional Detector Module.

3.1.1 RECOMMENDED CABLE TYPES - CONVENTIONAL CIRCUITS

The cable selected for interconnection to the control equipment should meet the requirements of any national codes (e.g. BS 5839) or relevant approval bodies. Cables should not normally have a cross sectional area of less than 1mm² for solid conductors or 0.5mm² for stranded conductors.

The following cables are generally recommended for use:

- a) PVC insulated cable to BS6004, run in screwed steel conduit to BS4568 Part 1 or plastic conduit to BS4607, or trunking.
- b) 16/0.2mm twin or multi-core cable to DEF Standard 61-12 (Part 5), run in screwed steel conduit to BS4568 Part 1, or in plastic conduit to BS4607, or trunking.
- c) PVC insulated cable to BS6231, Type BK, run in screwed steel conduit to BS4568 Part 1, or plastic conduit to BS4607, or trunking. (Conductors having a cross-section of less than 1mm² should not be drawn into conduit but can be run in trunking),

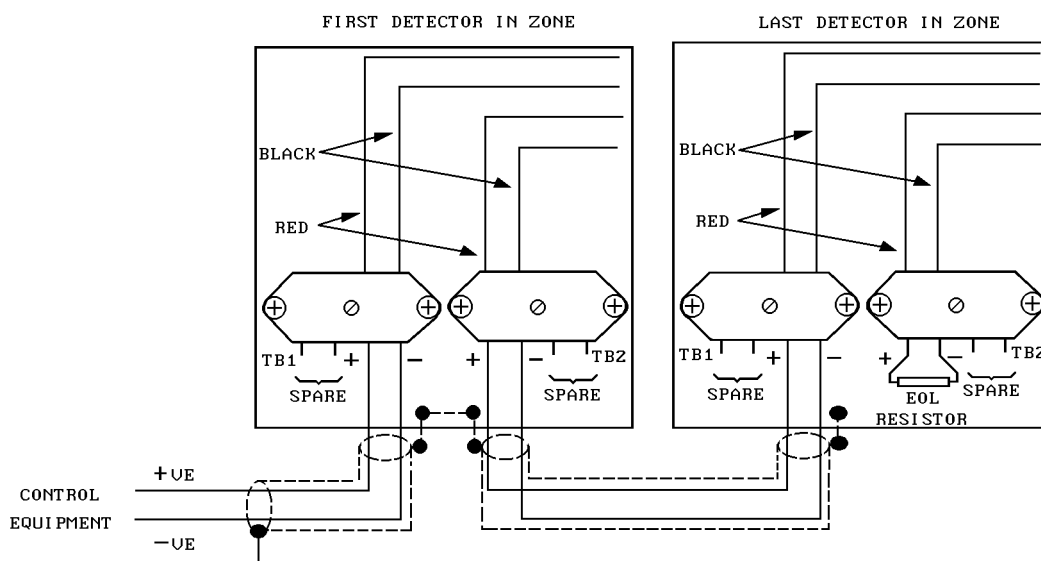


Fig. 3 Detector Wiring - Conventional [Safe Area] Circuits

- d) mineral insulated cable, twin or multi-core, to BS6207 Part 1, with all cable terminations and fittings supplied by the manufacturer of the cable,
- e) shipwiring cable to BS6883,
- f) PVC insulated, PVC sheathed cable, to BS6004 may be used for the wiring of detector and sounder circuits where the wiring is monitored and the risk of mechanical damage is small,
- g) PVC insulated, PVC inner sheathed, steel wire armoured and PVC oversheathed cable to BS6346.

- c) twin MICC type 2L1 and 2L1.5 and 2111.5,
- d) PVC insulated, PVC inner sheathed, steel wire armoured and PVC oversheathed cable to BS6346,
- e) shipwiring Cable to BS6853 with braid armour.

Note: In determining the maximum cable length it must be remembered that the local capacitance calculation should allow 4nF for each S131 on a circuit.

3.1.2 CABLE ROUTING

All interconnecting cables should be run in conduit or trunking which is reserved exclusively for fire alarm circuits. Where such separation is not possible MICC cable should be used.

Particular care must be taken to ensure that detector wiring is not run close to a.c. power circuits.

3.2 INTRINSICALLY SAFE CIRCUITS - HAZARDOUS AREAS

The S131 detector is certified by BASEEFA as intrinsically safe apparatus and, as such, it may be used as part of a certified intrinsically safe system. The system must incorporate a specified safety barrier or galvanic isolation and there will be restrictions on cable types and lengths. The detailed parameters will depend on the type of barrier used.

System 600 (Cat.(ib)) and System 601 (Cat.(ia)), both by THORN Security Limited, are certified systems incorporating the S131 detector. Details of these systems are available from THORN Security Limited.

Wiring from the hazardous area to the safe area passes through the diode safety barrier as shown in Fig. 5.

Note: The screen or sheath of the cable should be earthed only at the safety barrier.

3.2.1 RECOMMENDED CABLE TYPES - I.S. CIRCUITS

The cable selected for interconnection to the control equipment should meet the requirements of any national codes (e.g. BS5839) and additionally must meet the requirements of the intrinsic safety certification. These requirements will depend, among other things, on the type of barrier used in the system.

Examples of suitable cables are given below:

- a) PVC insulated and protected screened twin 16/0.2mm type 16.2.2c to DEF Standard 61-12 Part 5.
- b) elastomeric instrument screened twin 0.5mm² type MEIICBII (DL) with EPR insulation and CSP sheathed,

4. INITIAL WIRING CHECK

After installing the wiring as detailed above, and before connecting any detectors or end-of-line devices, the following tests should be carried out.

4.1 CONTINUITY TESTS

To check continuity proceed as follows:

- a) Short-circuit + to + and - to - at each detector terminal block,
- b) short-circuit the pair at the end furthest from the control equipment,
- c) using an ohmmeter set to its lowest range, check the loop resistance at the control equipment end,
- d) if the reading obtained is less than 50 ohms record the reading obtained and proceed to Para. 4.2,
- e) if the reading obtained is greater than 50 ohms locate and rectify continuity faults by quartering the system.

4.2 INSULATION TESTS

To check the insulation proceed as follows:

- a) Using an ohmmeter set to its highest range, check the resistance between the circuit and earth,
- b) if the reading obtained is greater than 1, megohm record the reading and proceed to c), otherwise locate and rectify the earth fault,
- c) remove the short-circuit at the end furthest from the control equipment,
- d) measure the resistance between the zone conductors,
- e) if the reading obtained is greater than 1 megohm record the reading, otherwise locate and rectify the insulation fault.

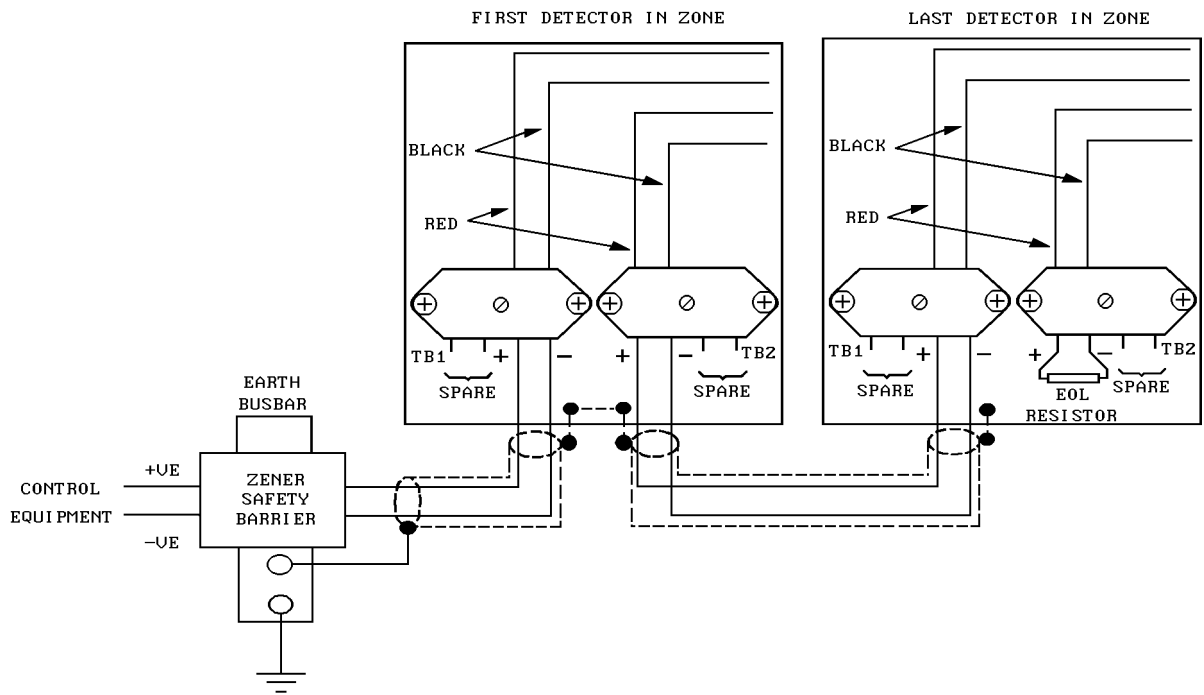


Fig. 4 Detector Wiring - Intrinsically Safe Circuits

4.3 TESTS ON INTRINSICALLY SAFE SYSTEMS

When carrying out tests on wiring of intrinsically safe systems it is essential that an INTRINSICALLY SAFE INSULATION TESTER is used, unless the area can be shown to be completely free of flammable gases. Further guidance on testing such systems can be found in BS5345 Part 4.

SECTION D - COMMISSIONING

1. SYSTEM CHECKS

Before connecting the zone wiring to the control equipment or to the detectors, a general inspection of the system should be carried out. In particular the position of the detectors should be checked to ensure that the requirements given in the System Design and Installation sections.

2. CONNECTING AND COMMISSIONING THE DETECTORS

When the system wiring has been successfully tested and the control equipment commissioned, the detector electronic assemblies may be fitted. The red and black wires are to be connected to the terminal blocks and the front cover assembly fitted to the rear section. Care should be taken to ensure that the internal wiring is not trapped between the terminal blocks and the front assembly.

It should be noted that a rubber seal is provided between the front and rear sections of the housing and this seal must be clean and dry before assembly. It is also important to ensure that no moisture is trapped inside the housing. Tighten the four hexagonal socket retaining screws to a torque of 3.5 - 4.5 N.m. (2.6 - 3.3 ibf.ft).

At this stage the angle of the detector should be adjusted to view the required area and the fixing nuts and bolts finally tightened. The cable from the circuit to the detector should then be routed, using cable ties or clips as necessary, to minimise the risk of physical damage.

2.1 DETECTOR TESTING - SAFE AREAS

Functional testing of detectors mounted in safe areas is most easily carried out using a small flame such as a match or cigarette lighter. The flickering radiation from such a flame should produce an alarm at a distance of 1 metre within 5 seconds. The red LED indicator in the detector should then light and the appropriate alarm response should be obtained at the control equipment.

In order to demonstrate the correct coverage of the system it is desirable to perform full-scale fire tests. These tests should use liquid fires as described in System Design Information Section 5.

2.2 DETECTOR TESTING - HAZARDOUS AREAS

The use of naked flames for detector testing in hazardous areas is obviously unacceptable. The T110 Test Source has been designed specifically for the on-site testing of the S100 Series of infra-red flame detectors, particularly for use in hazardous areas.

When testing the S131, the correct adaptor plate must be fitted to the T110 Test Source.

S131 Adaptor Plate

Stock Code No: 592-001-005

Note: The T110 has a charge/discharge circuit which take several seconds to recharge. Consequently, the T110 does not test the response time of a detector but only tests for response to a flame.

The T110 tests the S131 with a defined energy at a opened distance, indicating reliably when the S131 is operating above 75% of its specified performance levels.

SECTION E - MAINTENANCE

1. GENERAL

The S131 detector contains an encapsulated electronic assembly. There are no replaceable or adjustable components within the housing, which **SHOULD NOT BE OPENED** once installed and commissioned.

Routine maintenance is therefore limited to external cleaning and testing of the detectors.

1.1 ROUTINE INSPECTION

At regular intervals of not more than 3 months, detectors should be inspected visually to confirm that no physical damage has occurred and that the alignment of the detectors has not been disturbed. The detector windows should be checked to confirm that they are not blocked and that no physical obstructions have been placed between the detector and the protected area.

In addition, at intervals of not more than 1 year, each detector should be checked for correct operation. Any excessive deposits of dirt, oil etc. should be removed from the detector housing as described in 1.2.

Note: The inspection frequency specified above should be considered as a minimum requirement to be applied in the average environment. The inspection frequency should be increased for dirtier environments or those which present a higher risk of physical damage.

1.2 DETECTOR CLEANING

The S131 Infra-red detector is relatively tolerant of accumulations of dirt on the sensor window. However, thick deposits of dirt and oil will cause a loss of sensitivity.

It is recommended that detectors be cleaned using water or a detergent solution. A stiff bristle (not wire) brush may be used to remove heavy deposits.

Note: The act of cleaning or polishing the detector face and window may cause a detector to produce an alarm, it is important, therefore that before the window is cleaned, the detector should be isolated. By isolating the relevant circuit at the control unit. The circuit must be de-isolated as soon as cleaning is complete.